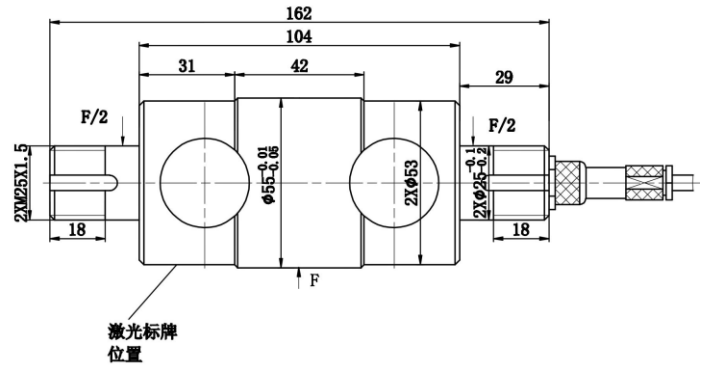
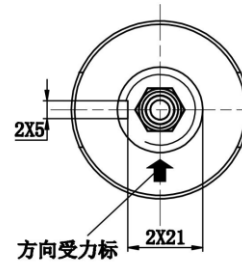


# CXZ01



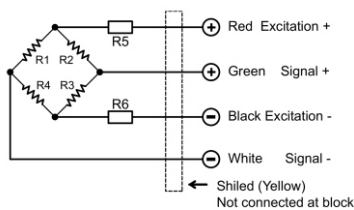
**CXZ01适用于塔机式起重机。安装于顶端滚轮，具有高精度及抗过载能力**

CXZ01 applied to tower crane. Installed in top end roller, with high precision and strong anti-overload capability

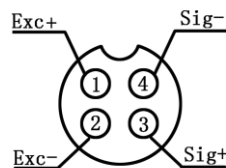


## 接线方式

### Circuit Diagram



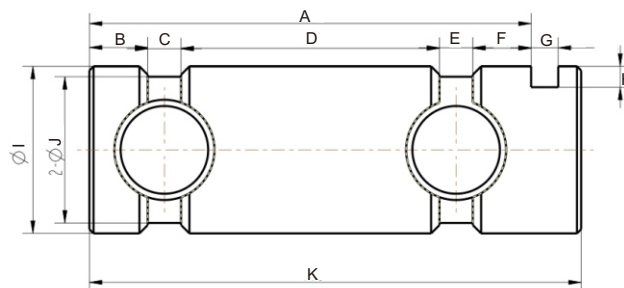
Pinhole definition:



## 主要技术指标 Specification

额定载荷 Rated load (E <sub>max</sub> )	2.7,4.5t	绝缘阻抗 Insulation resistance	≥5000MΩ
灵敏度 Sensitivity	1.0±0.2mV/V	工作温度范围 Operating Temp Range	(-30~+70)°C
综合误差 Combined error	±0.5%F.S	安全过载 Safe load limit	120%F.S
蠕变 (30分钟) Creep/30min	±0.1%F.S/30min	极限过载 Ultimate overload	150%F.S
零点平衡 Zero balance	±0.1%F.S	推荐激励电压 Recommend excitation	10~12V DC
零点温度影响 TCO	±0.1% F.S/10°C	最大激励电压 Max excitation	15V DC
输出温度影响 TC SPAN	±0.1%F.S/10°C	密封等级 Protection Class	Ip67
输入阻抗 Input resistance	750±15Ω	材质 Material	合金钢 Alloy steel
输出阻抗 Output resistance	702±3Ω	连接电缆 Cable	Length: 18m Diameter: Φ5mm

# CXZ02

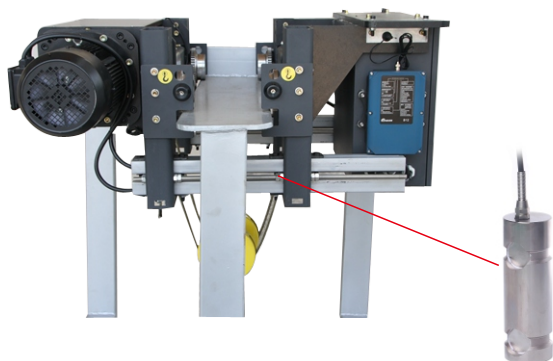


**CXZ02 适用于起重机欧式葫芦, 安装固定滑轮**

CXZ02 Applied to crane hoist in Europe style, installed in fixed pulley

安装示意图

Installation example



## 主要外形尺寸 Main Dimensions

t	A	B	C	D	E	F	G	H	I	J	K
2	106	14	8	62	8	14	6.5	5	40	35	118
3	120	15.5	8	72	8	14.5	6	6	45	39	134
6	134	15	15	77	15	12	6.5	7	50	45	146

可选配限制器

Optional indicator



INP-A

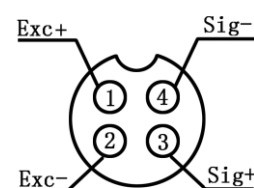
318-A

318-C

接线方式

Circuit Diagram

Pinhole definition:



## 主要技术指标 Specification

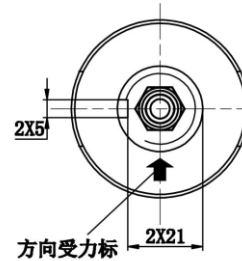
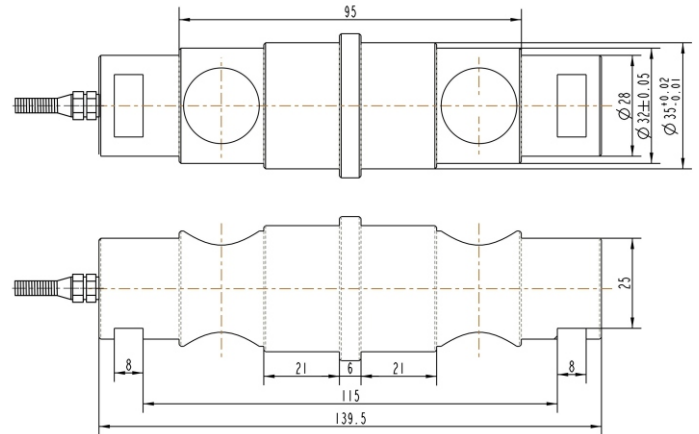
额定载荷 Rated load (E <sub>max</sub> )	2,3,6 t	绝缘阻抗 Insulation resistance	≥5000MΩ
灵敏度 Sensitivity	1.0±0.002% mV/V	工作温度范围 Operating Temp Range	(-30~+70)°C
综合误差 Combined error	±0.03 % F.S	安全过载 Safe load limit	150%F.S
蠕变 (30分钟) Creep/30min	±0.1 % F.S/30min	极限过载 Ultimate overload	200%F.S
零点平衡 Zero balance	±1 % F.S	推荐激励电压 Recommend excitation	10~12V(DC or AC)
零点温度影响 TCO	±0.02 % F.S/10°C	最大激励电压 Max excitation	15V DC
输出温度影响 TC SPAN	±0.02 % F.S/10°C	密封等级 Protection Class	IP68
输入阻抗 Input resistance	380±10Ω	材质 Material	合金钢 Alloy steel 不锈钢 Stainless steel
输出阻抗 Output resistance	350±3Ω	电缆 Cable	Length: 2.5m Diameter: 5mm

# CXZ03



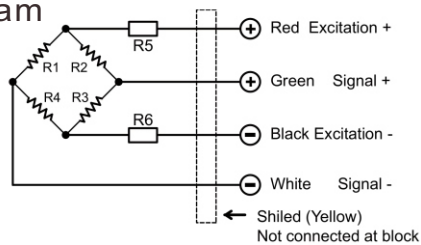
**CXZ03 适用于塔机式起重机。安装于顶端滚轮，具有高精度及抗过载能力**

CXZ03 applied to tower crane. Installed in top end roller, with high precision and strong anti-overload capability

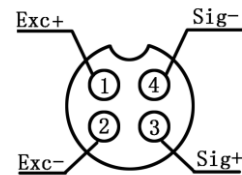


## 接线方式

### Circuit Diagram



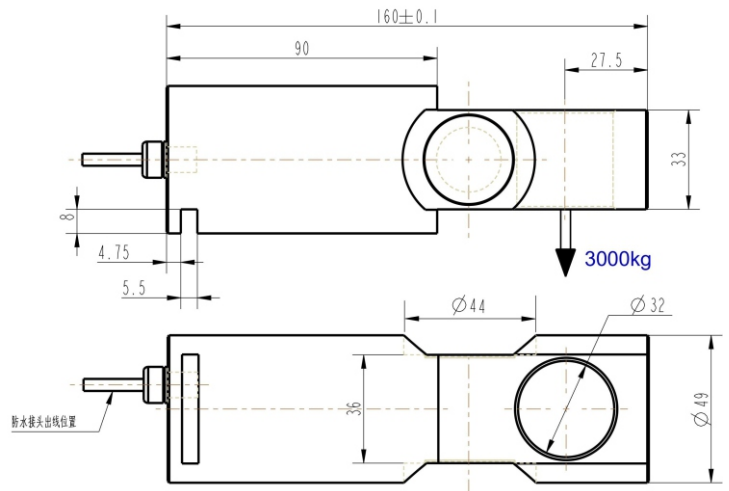
Pinhole definition:



## 主要技术指标 Specification

额定载荷 Rated load (E <sub>max</sub> )	2t	绝缘阻抗 Insulation resistance	≥5000MΩ
灵敏度 Sensitivity	1.0±0.2mV/V	工作温度范围 Operating Temp Range	(-30~+70)°C
综合误差 Combined error	±0.5%F.S	安全过载 Safe load limit	120%F.S
蠕变 (30分钟) Creep/30min	±0.1%F.S/30min	极限过载 Ultimate overload	150%F.S
零点平衡 Zero balance	±0.1%F.S	推荐激励电压 Recommend excitation	10~12V DC
零点温度影响 TCO	±0.1% F.S/10°C	最大激励电压 Max excitation	15V DC
输出温度影响 TC SPAN	±0.1%F.S/10°C	密封等级 Protection Class	Ip67
输入阻抗 Input resistance	750±15Ω	材质 Material	合金钢 Alloy steel
输出阻抗 Output resistance	702±3Ω	连接电缆 Cable	Length: 18m Diameter: Φ5mm

# CXZ04-(AIL)

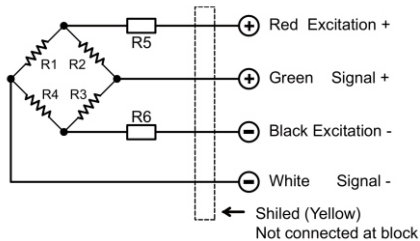


**CXZ04-(AIL)适用于高精度施工起重机械。安装于提升机与吊篮链接部位，具有精度高及抗偏载等优点**

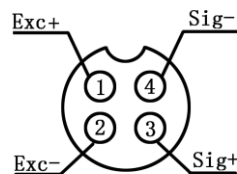
CXZ04-(AIL) applied to high-precision construction crane. Installed in the junction between hoist and basket, with high precision and strong anti-uneven loading advantages.

接线方式

Circuit Diagram



Pinhole definition:



可选配限制器  
Optional indicator



318-B



318-C

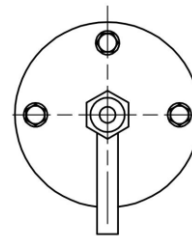
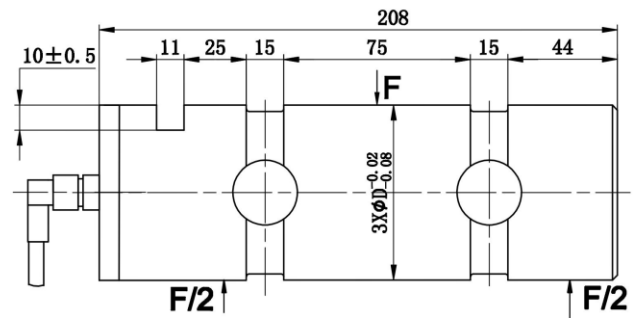
## 主要技术指标 Specification

额定载荷 Rated load (E <sub>max</sub> )	3t	绝缘阻抗 Insulation resistance	≥5000MΩ
灵敏度 Sensitivity	1.0±0.2mV/V	工作温度范围 Operating Temp Range	(-30~+70)°C
综合误差 Combined error	±0.5%F.S	安全过载 Safe load limit	120%F.S
蠕变 (30分钟) Creep/30min	±0.1%F.S/30min	极限过载 Ultimate overload	150%F.S
零点平衡 Zero balance	±0.1%F.S	推荐激励电压 Recommend excitation	10~12V DC
零点温度影响 TCO	±0.1% F.S/10°C	最大激励电压 Max excitation	15V DC
输出温度影响 TC SPAN	±0.1%F.S/10°C	密封等级 Protection Class	Ip67
输入阻抗 Input resistance	380±15Ω	材质 Material	合金钢 Alloy steel
输出阻抗 Output resistance	350±3Ω	连接电缆 Cable	Length: 18m Diameter: Φ5mm

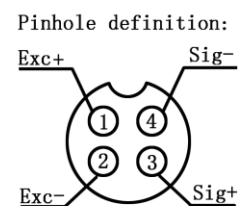
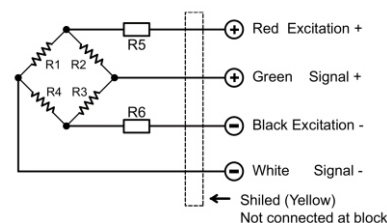
**CXZ05**

**CXZ05 适用于各种小轴径称重控制领域，无孔结构，防护性能好，可应用于特殊场合**

CXZ05 Applied to various weighing control industry with small axial diameter, blind-hole structure, good protection performance, applied to special occasions.



### 接线方式 Circuit Diagram



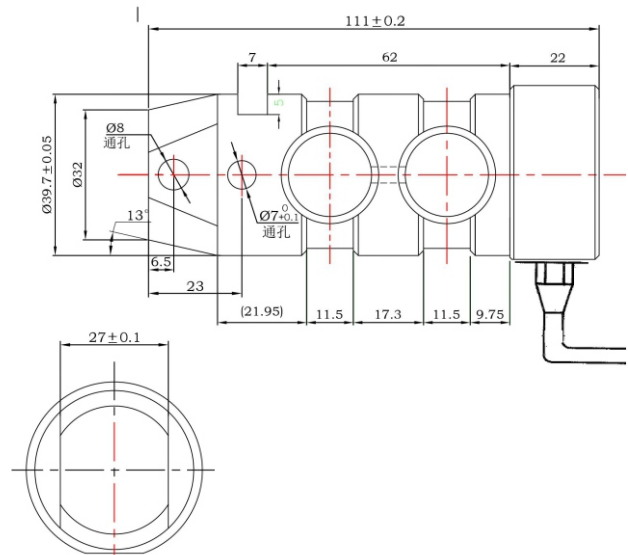
### 主要技术指标 Specification

额定载荷 Rated load (E <sub>max</sub> )	7,10,20,25t	绝缘阻抗 Insulation resistance	≥5000MΩ
灵敏度 Sensitivity	1.0±0.2mV/V	工作温度范围 Operating Temp Range	(-30~+70)°C
综合误差 Combined error	±0.5%F.S	安全过载 Safe load limit	120%F.S
蠕变 (30分钟) Creep/30min	±0.1%F.S/30min	极限过载 Ultimate overload	150%F.S
零点平衡 Zero balance	±0.1%F.S	推荐激励电压 Recommend excitation	10~12V DC
零点温度影响 TCO	±0.1% F.S/10°C	最大激励电压 Max excitation	15V DC
输出温度影响 TC SPAN	±0.1%F.S/10°C	密封等级 Protection Class	Ip67
输入阻抗 Input resistance	750±15Ω	材质 Material	不锈钢 Stainless steel
输出阻抗 Output resistance	702±3Ω	连接电缆 Cable	Length:5m Diameter: Φ5mm





# CXZ40



## CXZ40 适用于适用施工升降机

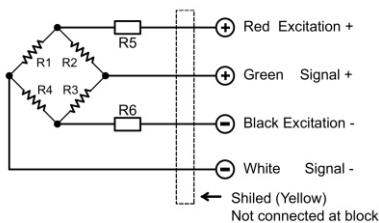
CXZ40 Suitable for construction elevator

## 可选配限制器

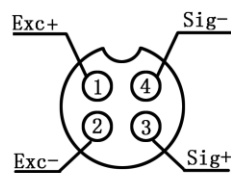
Optional indicator

## 接线方式

### Circuit Diagram



Pinhole definition:



318-A



318-C



318-D



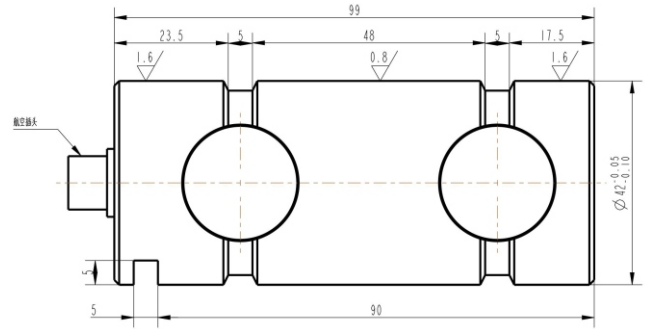
LMT

## 主要技术指标 Specification

额定载荷Rated load (Emax)	3 t	绝缘阻抗Insulation resistance	≥5000MΩ
灵敏度 Sensitivity	1.0±0.002%mV/V	工作温度范围Operating Temp Range	(-20~+60)°C
综合误差Combined error	±0.5 % F.S	安全过载 Safe load limit	150%F.S
蠕变 (30分钟) Creep/30min	±0.1 % F.S/30min	极限过载 Ultimate overload	200%F.S
零点平衡Zero balance	±1 % F.S	推荐激励电压 Recommend excitation	10~12V(DC or AC)
零点温度影响TCO	±0.02 % F.S/10°C	最大激励电压 Max excitation	15V DC
输出温度影响TC SPAN	±0.02 % F.S/10°C	密封等级 Protection Class	IP67
输入阻抗Input resistance	420±30Ω	材质 Material	合金钢Alloy steel 不锈钢Stainless steel
输出阻抗Output resistance	352±3Ω	电缆 Cable	Length:5m Diameter:6mm



# CXZ42

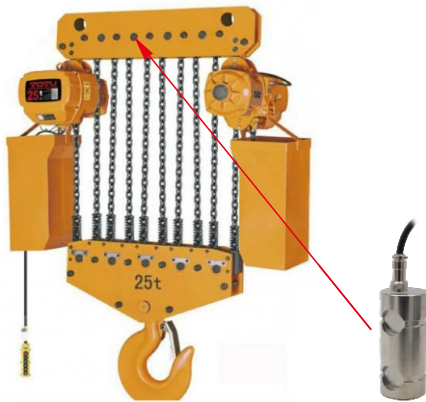


## CXZ42 适用于大量欧式葫芦, 替代定油轮轴承

CXZ42 Applied to various crane hoist in Europe style, replacing the fixed tanker bearing.

### 安装示意图

Installation example



### 可选配限制器

Optional indicator



INP-A



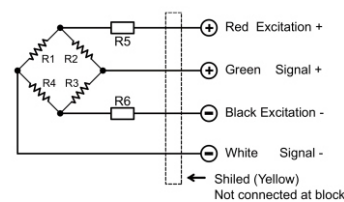
318-A



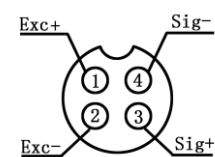
318-C

### 接线方式

Circuit Diagram



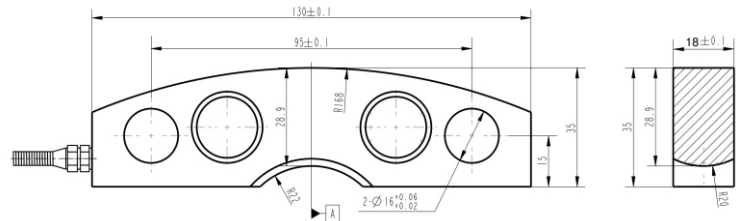
Pinhole definition:



## 主要技术指标 Specification

额定载荷Rated load (Emax)	10 t	绝缘阻抗Insulation resistance	$\geq 5000M\Omega$
灵敏度 Sensitivity	1.0 $\pm$ 0.002% $mV/V$	工作温度范围Operating Temp Range	(-30~+70) $^{\circ}C$
综合误差Combined error	$\pm 0.03\%$ F.S	安全过载 Safe load limit	150%F.S
蠕变 (30分钟) Creep/30min	$\pm 0.1\%$ F.S/30min	极限过载 Ultimate overload	200%F.S
零点平衡Zero balance	$\pm 1\%$ F.S	推荐激励电压 Recommend excitation	10~12V(DC or AC)
零点温度影响TCO	$\pm 0.02\%$ F.S/ $10^{\circ}C$	最大激励电压 Max excitation	15V DC
输出温度影响TC SPAN	$\pm 0.02\%$ F.S/ $10^{\circ}C$	密封等级 Protection Class	IP68
输入阻抗Input resistance	380 $\pm$ 10 $\Omega$	材质 Material	合金钢Alloy steel 不锈钢Stainless steel
输出阻抗Output resistance	350 $\pm$ 3 $\Omega$	电缆 Cable	Length:2.5m Diameter:5mm

# CQS01



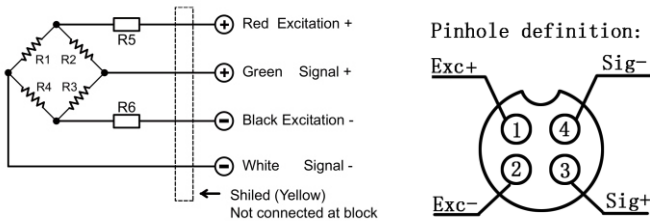
**CQS01适用于环链起重机，具有精度高及抗过载能力强，安装于起重运行跑车与起重机连接部位**

CQS01 It is suitable for chain crane with high precision And strong anti-overload capacity, installed in the lifting operation of sports cars Connecting part with crane.

可选配限制器  
Optional indicator



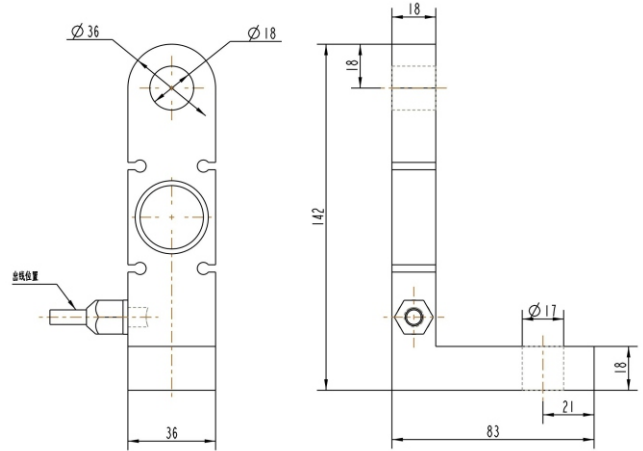
接线方式  
Circuit Diagram



## 主要技术指标 Specification

额定载荷Rated load (E <sub>max</sub> )	1-3 t	绝缘阻抗Insulation resistance	≥ 5000MΩ
灵敏度 Sensitivity	1.0±0.002% <sub>mV/V</sub>	工作温度范围Operating Temp Range	(-30~+70)°C
综合误差Combined error	±0.03 % F.S	安全过载 Safe load limit	150%F.S
蠕变 (30分钟) Creep/30min	±0.1 % F.S/30min	极限过载 Ultimate overload	200%F.S
零点平衡Zero balance	±1 % F.S	推荐激励电压 Recommend excitation	10~12V(DC or AC)
零点温度影响TCO	±0.02 % F.S/10°C	最大激励电压 Max excitation	15V DC
输出温度影响TC SPAN	±0.02 % F.S/10°C	密封等级 Protection Class	IP68
输入阻抗Input resistance	380±10 Ω	材质 Material	合金钢Alloy steel 不锈钢Stainless steel
输出阻抗Output resistance	350±3 Ω	电缆 Cable	Length:2.5m Diameter:5mm

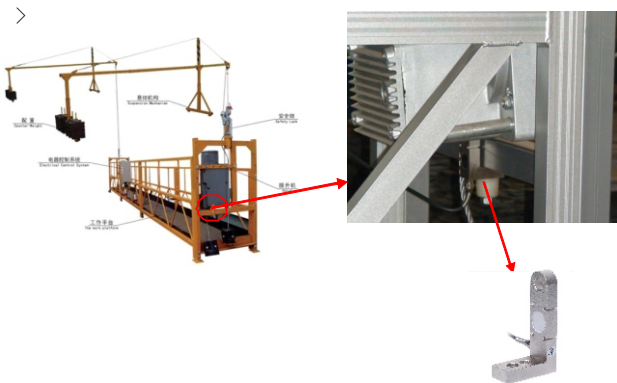
# CLT01



**CLT01 适用于建筑施工吊篮**  
CLT01 Applied to construction basket.

**可选配限制器**  
Optional indicator

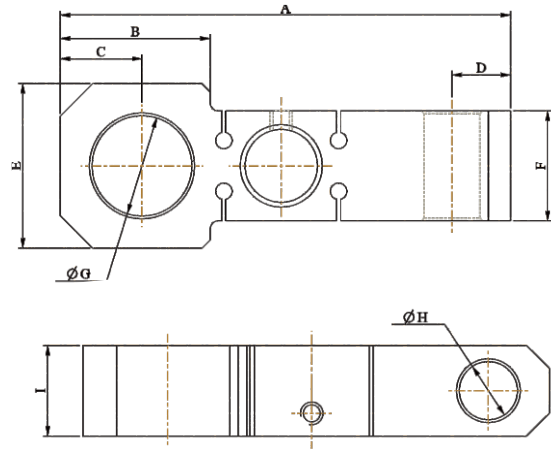
**安装示意图**  
Installation example



## 主要技术指标 Specification

额定载荷Rated load (Emax)	1 t	绝缘阻抗Insulation resistance	≥5000MΩ
灵敏度 Sensitivity	1.0±0.002% $mV/V$	工作温度范围Operating Temp Range	(-30~+70)°C
综合误差Combined error	±0.03 % F.S	安全过载 Safe load limit	150%F.S
蠕变 (30分钟) Creep/30min	±0.1 % F.S/30min	极限过载 Ultimate overload	200%F.S
零点平衡Zero balance	±1 % F.S	推荐激励电压 Recommend excitation	10~12V(DC or AC)
零点温度影响TCO	±0.02 % F.S/10°C	最大激励电压 Max excitation	15V DC
输出温度影响TC SPAN	±0.02 % F.S/10°C	密封等级 Protection Class	IP68
输入阻抗Input resistance	380±10Ω	材质 Material	合金钢Alloy steel 不锈钢Stainless steel
输出阻抗Output resistance	350±3Ω	电缆 Cable	Length:2.5m Diameter:5mm

# CDL02



## CDL02 适用于各类环链葫芦起重设备

CDL02 Applied to all kinds of cirde wire rope hoist lift equipment

## 主要外形尺寸 Main Dimensions

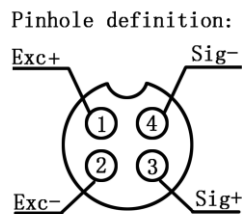
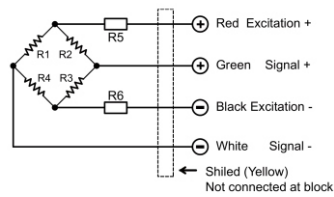
t	A	B	C	D	E	F	G	H	I
1	120	46	24.5	14.5	46	32.2	32	13	30
2	165	55	30	21.5	60	40	36.5	20.5	32
3	178	66	32	21.5	65.5	45	43.5	23.5	35.5

### 安装示意图

Installation example

### 接线方式

Circuit Diagram



### 可选配限制器

Optional indicator



INP-A



318-A

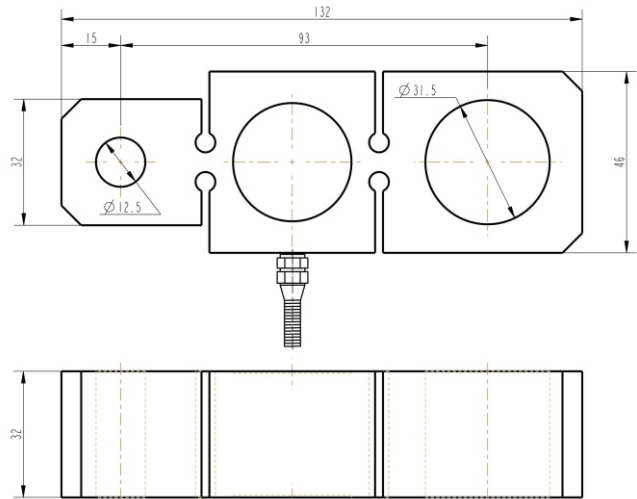
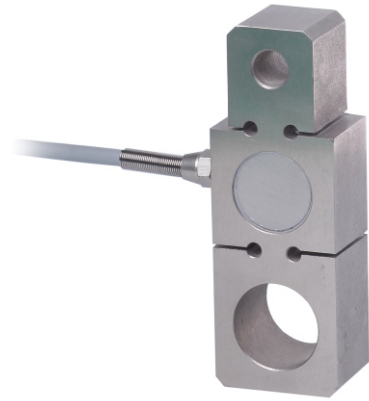


318-C

## 主要技术指标 Specification

额定载荷Rated load (Emax)	1,2,3 t	绝缘阻抗Insulation resistance	≥5000MΩ
灵敏度 Sensitivity	1.0±0.002%mV/V	工作温度范围Operating Temp Range	(-30~+70)°C
综合误差Combined error	±0.03 % F.S	安全过载 Safe load limit	150%F.S
蠕变 (30分钟) Creep/30min	±0.1 % F.S/30min	极限过载 Ultimate overload	200%F.S
零点平衡Zero balance	±1 % F.S	推荐激励电压 Recommend excitation	10~12V(DC or AC)
零点温度影响TCO	±0.02 % F.S/10°C	最大激励电压 Max excitation	15V DC
输出温度影响TC SPAN	±0.02 % F.S/10°C	密封等级 Protection Class	IP68
输入阻抗Input resistance	380±10Ω	材质 Material	合金钢Alloy steel 不锈钢Stainless steel
输出阻抗Output resistance	350±3Ω	电缆 Cable	Length:2.5m Diameter:5mm

# CDL01



**CDL01 适用于各类环链葫芦起重设备**  
CDL01 Applied to all kinds of cirde wire rope hoist lift equipment

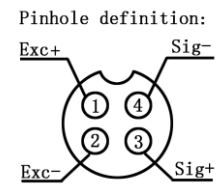
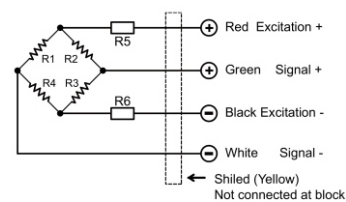
安装示意图  
Installation example



可选配限制器  
Optional indicator



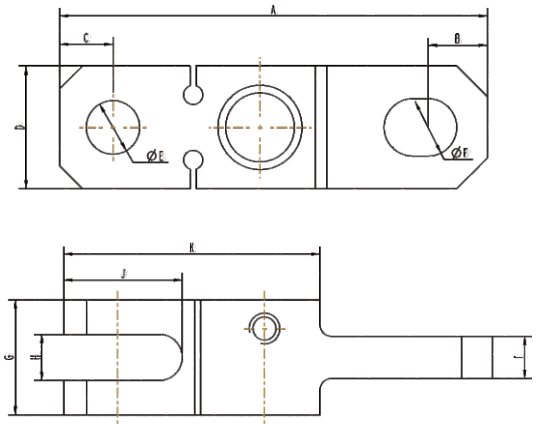
接线方式  
Circuit Diagram



## 主要技术指标 Specification

额定载荷Rated load (Emax)	1 t	绝缘阻抗Insulation resistance	$\geq 5000M\Omega$
灵敏度 Sensitivity	1.0 $\pm$ 0.002%mV/V	工作温度范围Operating Temp Range	(-30~+70) $^{\circ}$ C
综合误差Combined error	$\pm 0.03$ % F.S	安全过载 Safe load limit	150%F.S
蠕变 (30分钟) Creep/30min	$\pm 0.1$ % F.S/30min	极限过载 Ultimate overload	200%F.S
零点平衡Zero balance	$\pm 1$ % F.S	推荐激励电压 Recommend excitation	10~12V(DC or AC)
零点温度影响TCO	$\pm 0.02$ % F.S/ $10^{\circ}$ C	最大激励电压 Max excitation	15V DC
输出温度影响TC SPAN	$\pm 0.02$ % F.S/ $10^{\circ}$ C	密封等级 Protection Class	IP68
输入阻抗Input resistance	380 $\pm$ 10 $\Omega$	材质 Material	合金钢Alloy steel 不锈钢Stainless steel
输出阻抗Output resistance	350 $\pm$ 3 $\Omega$	电缆 Cable	Length:2.5m Diameter:5mm

# CSL01



**CSL01 适用于各类环链葫芦起重设备**  
CSL01 Applied to all kinds of cirde wire rope hoist lift equipment

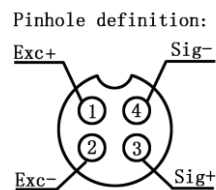
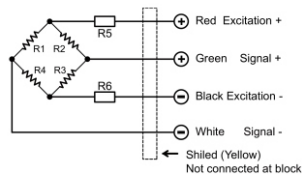
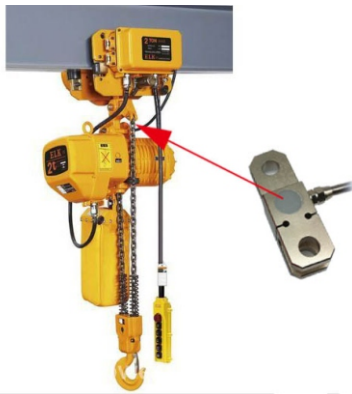
## 主要外形尺寸 Main Dimensions

t	A	B	C	D	E	F	G	H	I	J	K
1	80	10.5	9	25	8	8*4.5	20	8	7.2	22	52.5
2	90	12	14	25	9	10*4.5	22	9.2	7	28	57
3	112	15.5	14	32	14	15*4	30	12	11	32	67
5	105	16	13	32	14.2	14.2	30	12.5	11	31	63

安装示意图  
Installation example

接线方式  
Circuit Diagram

可选配限制器  
Optional indicator



INP-A



318-A

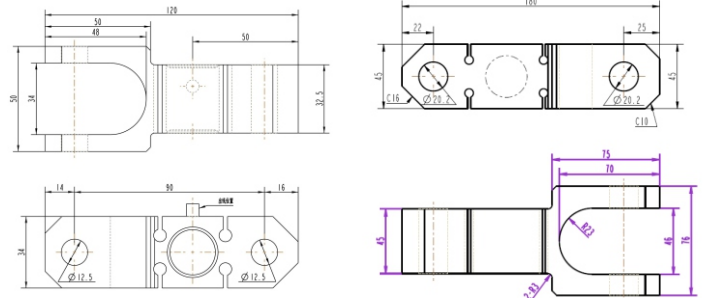


318-C

## 主要技术指标 Specification

额定载荷Rated load (Emax)	1,2,3,5 t	绝缘阻抗Insulation resistance	≥5000MΩ
灵敏度 Sensitivity	1.0±0.002% <i>m</i> V/V	工作温度范围Operating Temp Range	(-30~+70)°C
综合误差Combined error	±0.03 % F.S	安全过载 Safe load limit	150%F.S
蠕变 (30分钟) Creep/30min	±0.1 % F.S/30min	极限过载 Ultimate overload	200%F.S
零点平衡Zero balance	±1 % F.S	推荐激励电压 Recommend excitation	10~12V(DC or AC)
零点温度影响TCO	±0.02 % F.S/10°C	最大激励电压 Max excitation	15V DC
输出温度影响TC SPAN	±0.02 % F.S/10°C	密封等级 Protection Class	IP68
输入阻抗Input resistance	380±10Ω	材质 Material	合金钢Alloy steel 不锈钢Stainless steel
输出阻抗Output resistance	350±3Ω	电缆 Cable	Length:2.5m Diameter:5mm

# CGL01



0.5t-1t

2t-3t

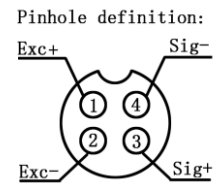
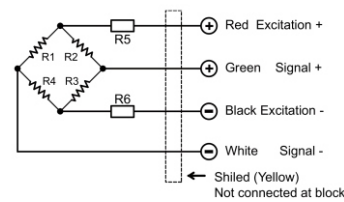
**CGL01 适用于各类环链葫芦起重设备**  
CGL01 Applied to all kinds of cirde wire rope hoist lift equipment

**可选配限制器**  
Optional indicator

**安装示意图**  
Installation example



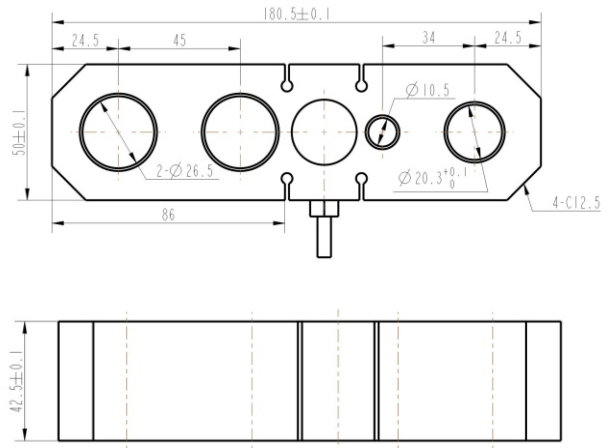
**接线方式**  
Circuit Diagram



## 主要技术指标 Specification

额定载荷Rated load (Emax)	0.5,1,2,3 t	绝缘阻抗Insulation resistance	≥5000MΩ
灵敏度 Sensitivity	1.0±0.002%mV/V	工作温度范围Operating Temp Range	(-30~+70)°C
综合误差Combined error	±0.03 % F.S	安全过载 Safe load limit	150%F.S
蠕变 (30分钟) Creep/30min	±0.1 % F.S/30min	极限过载 Ultimate overload	200%F.S
零点平衡Zero balance	±1 % F.S	推荐激励电压 Recommend excitation	10~12V(DC or AC)
零点温度影响TCO	±0.02 % F.S/10°C	最大激励电压 Max excitation	15V DC
输出温度影响TC SPAN	±0.02 % F.S/10°C	密封等级 Protection Class	IP68
输入阻抗Input resistance	380±10Ω	材质 Material	合金钢Alloy steel 不锈钢Stainless steel
输出阻抗Output resistance	350±3Ω	电缆 Cable	Length:2.5m Diameter:5mm

# CBH02

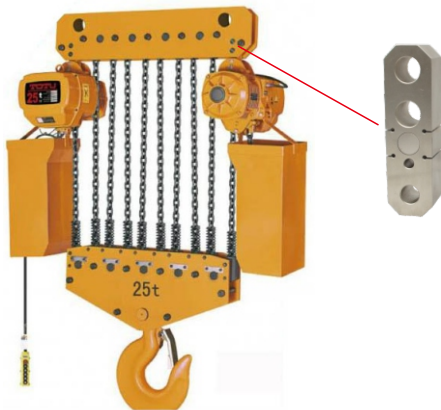


## CBH02 适用于大量程欧式葫芦, 替代固定模块

CBH02 Applicable to large - range European - style gourd, replace fixed module

### 安装示意图

Installation example



### 可选配限制器

Optional indicator



INP-A



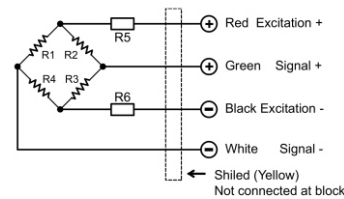
318-A



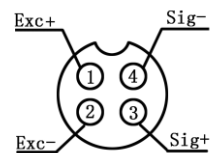
318-C

### 接线方式

Circuit Diagram



Pinhole definition:

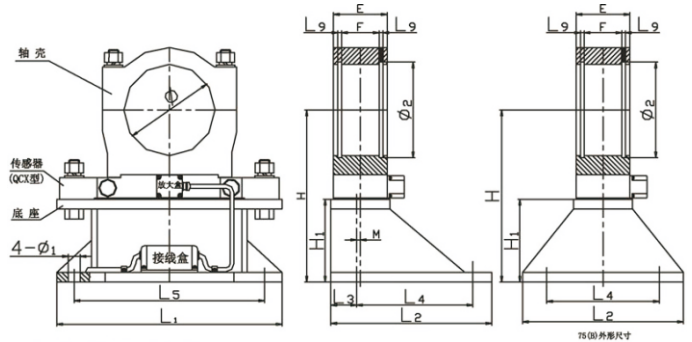
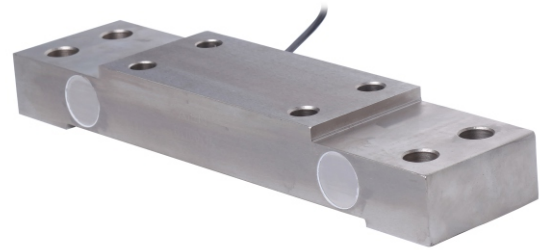
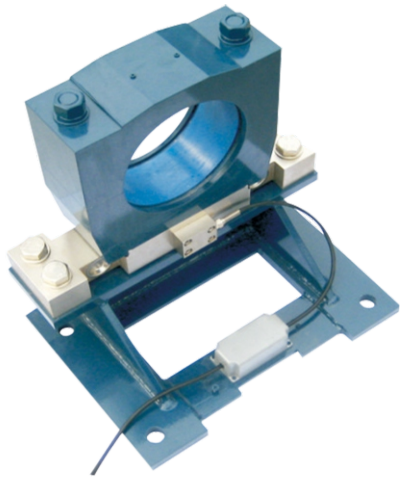


## 主要技术指标 Specification

额定载荷Rated load (Emax)	3t	绝缘阻抗Insulation resistance	≥5000MΩ
灵敏度 Sensitivity	1.0±0.002%mV/V	工作温度范围Operating Temp Range	(-30~+70)°C
综合误差Combined error	±0.03 % F.S	安全过载 Safe load limit	150%F.S
蠕变 (30分钟) Creep/30min	±0.1 % F.S/30min	极限过载 Ultimate overload	200%F.S
零点平衡Zero balance	±1 % F.S	推荐激励电压 Recommend excitation	10~12V(DC or AC)
零点温度影响TCO	±0.02 % F.S/10°C	最大激励电压 Max excitation	15V DC
输出温度影响TC SPAN	±0.02 % F.S/10°C	密封等级 Protection Class	IP68
输入阻抗Input resistance	380±10 Ω	材质 Material	合金钢Alloy steel 不锈钢Stainless steel
输出阻抗Output resistance	350±3 Ω	电缆 Cable	Length:2.5m Diameter:5mm



# CBT01



**CBT01起重重量限制器是一种起重机械安全保护装置，可用于1-600t桥吊、门吊和起闭机等起重设备上。**

CBT01 Lifting weight is a mechanical safety device that can be used under 1-600t bridge cranes, gantry cranes, hoist and other lift equipment.

带轴壳和底座的传感器，结合IN-318型仪表，是起重重量限制器的最常见形式。The most common weight limiter is with the axle housing and the base of the load cell, combined with IN-318 type instrument.

标准产品的尺寸如下表，订货型号如下：  
Standard product size as below:

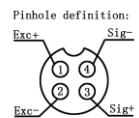
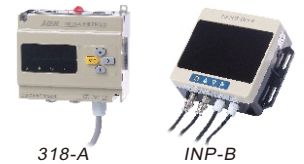
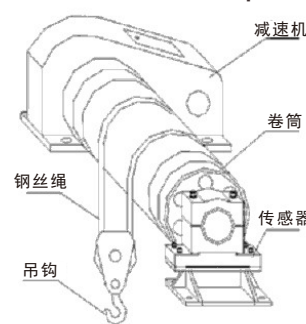
八五标准系列尺寸 (表1) 大连  
Eighty-five standard series size (Table 1) in Dalian

起重量 lifting weigh	滑轮 pulle	传感器 load cell	L1	L2	L3	L4	L5	L6	H	H1	Φ	Φ1	Φ2	E	F	M
5.10	2,3	1.5	360	180	30	120	300	7	210	59	140	22	148	75	45	30
16.20	3,4	2,5	410	200	30	140	350	7	260	84	170	22	178	100	70	30
32	4	4	470	230	35	160	400	7	360	164	200	22	208	100	70	35
50	5	5	520	250	35	180	450	7	420	224	200	26	208	100	70	35

常规标准系列尺寸 (表2) 上海  
Conventional standard series size (Table 2) Shanghai

起重量 lifting weigh	滑轮 pulle	传感器 load cell	L1	L2	L3	L4	L5	L6	H	H1	Φ	Φ1	Φ2	E	F	M
5.10	2,3	1.5	355	220	55	140	300	7	300	149	140	22	148	75	45	0
16.20	3,4	2,5	420	300	55	210	355	7	320	144	170	22	178	100	70	0
32	4	4	490	300	55	200	410	7	400	204	200	22	208	100	70	0
50	5	5	520	300	55	200	460	7	460	264	200	22	208	100	70	0
75	5	7.5	490	300	55	200	410	7	400	204	200	22	208	100	70	0
75(B)	5	7.5	420	300	/	200	300	10	320	124	200	37	212	100	66	/

## 安装示意图 Installation example



名称型号 Specification	技术要求 Technical requirements	
精度 Accuracy	显示精度≤5%F.S,动作误差≤3%F.S, Display accuracy:≤5%F.S. Action error: ≤3%F.S	
预报警 Pre-alarm	额定起重量的90%发出声光报 90% of rated weight send out sound-light alarm	
延时报警 Delayed alarm	额定起重量的105%持续声光报警,延时1-2秒继电器动作,切断起升电 105% of rated weight send out continuous sound-light alarm. 1-2 seconds delay relay action, cut off the power lifting..	
立即报警 Promptly alarm	额定起重量的110~130%继电器立即动作, 切断起升电源 110-130% of rated weight, relay immediately action, cut of f the power lifting	
工作电源 Operating supply	220V或380vac、50HZ	220V or 380Wac, 50HZ
工作环境 Operating environment	-20%~60%≤90%RH	-20 ~+ 60 ≤90% RH
防护等级 protection rating	传感器为IP68, 仪表箱为IP42 Load cell: IP67, indicator: Ip42	
传感器过载能力 Load cell overload capacity	额定起重量的1.5倍	1.5 times of rated lifting capacity