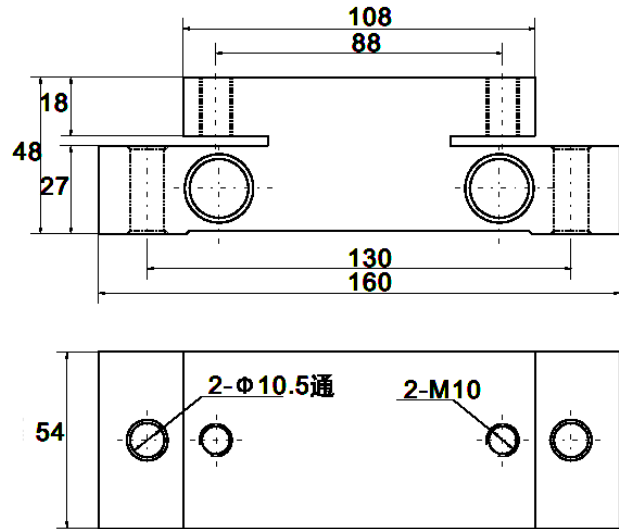
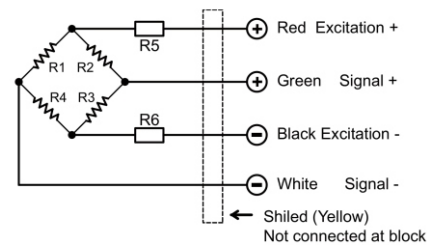


DGZ01



DGZ01 安装方便，适用于各种电梯称重、限载装置。

接线方式
Circuit Diagram

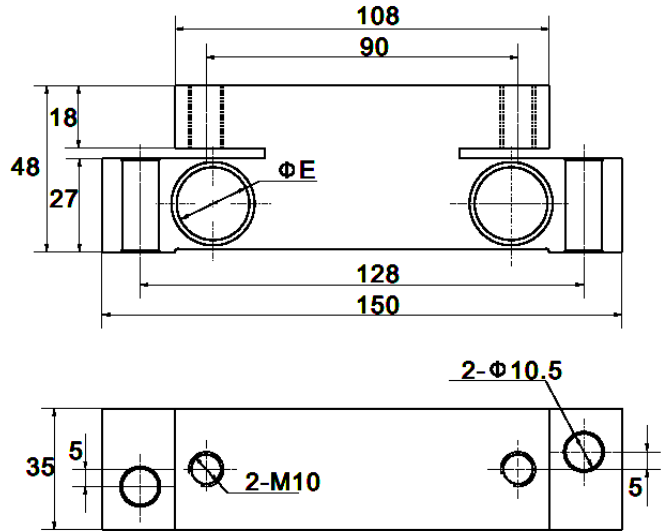


DGZ01 Easy installment ,applied to all kinds of elevator weighing system and overload limiting system

主要技术指标 Specification

额定载荷Rated load (E _{max})	5t	绝缘阻抗Insulation resistance	≥5000MΩ
灵敏度 Sensitivity	2.0±0.002%mV/V	工作温度范围Operating Temp Range	(-20~+60)°C
综合误差Combined error	±0.1 % F.S	安全过载 Safe load limit	150%F.S
蠕变 (30分钟) Creep/30min	±0.05 % F.S/30min	极限过载 Ultimate over load	180%F.S
零点平衡Zero balance	±1 % F.S	推荐激励电压 Recommend excitation	10~12V(DC or AC)
零点温度影响TCO	±0.02 % F.S/10°C	最大激励电压 Max excitation	15V DC
输出温度影响TC SPAN	±0.02 % F.S/10°C	密封等级 Protection Class	IP68
输入阻抗Input resistance	750±5Ω	材质 Material	合金钢Alloy steel 不锈钢Stainless steel
输出阻抗Output resistance	700±3Ω	电缆 Cable	Length:5m Diameter: Φ6mm

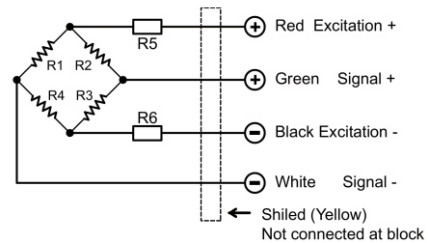
DGZ02



DGZ02 安装方便，适用于各种电梯称重、限载装置。

DGZ02 Easy installment ,applied to all kinds of elevator weighing system and overload limiting system

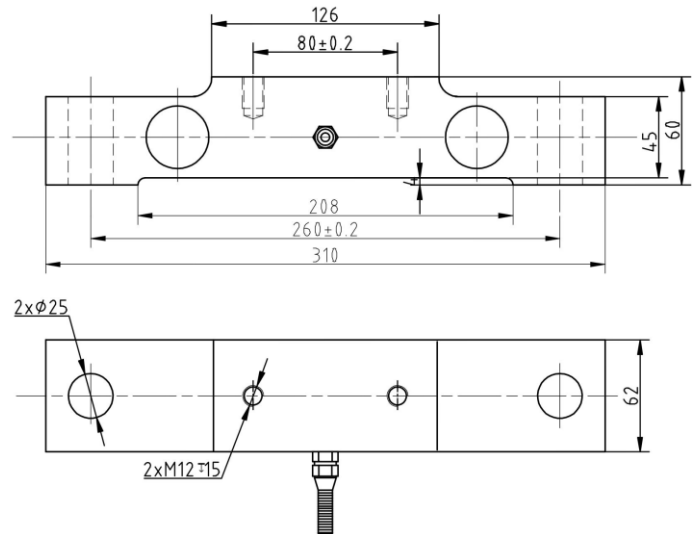
接线方式 Circuit Diagram



主要技术指标 Specification

额定载荷Rated load (Emax)	1t/3t	绝缘阻抗Insulation resistance	≥5000MΩ
灵敏度 Sensitivity	2.0±0.002%mV/V	工作温度范围Operating Temp Range	(-20~+60)°C
综合误差Combined error	±0.1 % F.S	安全过载 Safe load limit	150%F.S
蠕变 (30分钟) Creep/30min	±0.05 % F.S/30min	极限过载 Ultimate over load	180%F.S
零点平衡Zero balance	±1 % F.S	推荐激励电压 Recommend excitation	10~12V(DC or AC)
零点温度影响TCO	±0.02 % F.S/10°C	最大激励电压 Max excitation	15V DC
输出温度影响TC SPAN	±0.02 % F.S/10°C	密封等级 Protection Class	IP68
输入阻抗Input resistance	750±5Ω	材质 Material	合金钢Alloy steel 不锈钢Stainless steel
输出阻抗Output resistance	700±3Ω	电缆 Cable	Length:5m Diameter: Φ6mm

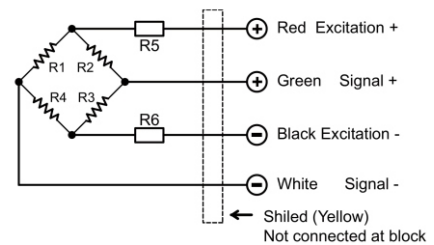
DGZ03



DGZ03安装方便,适用于各种电梯称重、限载装置

DGZ03 Easy installment, can be fit for all kinds of elevators, limiting device

接线方式 Circuit Diagram



主要技术指标 Specification

额定载荷 Rated load (E _{max})	5,10,15,20t	绝缘阻抗 Insulation resistance	≥5000MΩ
灵敏度 Sensitivity	1.5±0.05% mV/V	工作温度范围 Operating Temp Range	(-30~+70)°C
综合误差 Combined error	±0.5 % F.S	安全过载 Safe load limit	150%F.S
蠕变 (30分钟) Creep/30min	±0.05 % F.S/30min	极限过载 Ultimate over load	250%F.S
零点平衡 Zero balance	±2 % F.S	推荐激励电压 Recommend excitation	10~12V(DC or AC)
零点温度影响 TCO	±0.08 % F.S/10°C	最大激励电压 Max excitation	15V DC
输出温度影响 TC SPAN	±0.1% F.S/10°C	密封等级 Protection Class	IP67
输入阻抗 Input resistance	750±10Ω	材质 Material	合金钢 Alloy steel
输出阻抗 Output resistance	702±3Ω	电缆 Cable	Length:5m Diameter: φ 6mm

INP-W

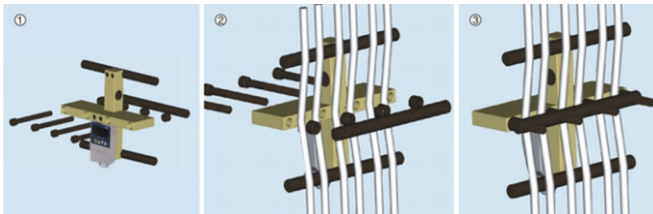


INP-W电梯载重测量装置,适用于各种电梯称重、限载装置

INP-W Elevator capacity measurement device, can easily apply to all kinds of weighing, overloading device

安装方式

Installation example

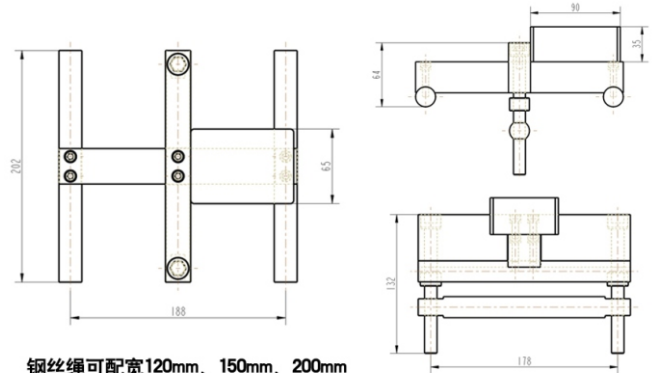


可夹宽度:100mm、150mm、200mm

产品技术参数

Technical parameters

项目Item	参数Parameter	项目Item	参数Parameter
显示方式Display mode	4位数码管显示4-digit Nixie tube display	额定载重Rated load	1/3/5/10t
工作电压Working voltage	AC/DC12-48V	报警输出Alarm output	AC250V/7A
工作温度Working temperature	-20~60°C	安装方式Installation	夹式Clip type
工作湿度Operating humidity	95%	动作误差Action error	≤1%F.S
综合误差Comprehensive error	≤1%F.S	蜂鸣器Buzzer	≥90dB
过载预警Overload early warning	≥额定重量的95% (可设置); 继电器状态: 线圈失电, 常闭触点闭合; 蜂鸣器状态: 断续响 (1秒, 间隔2秒) ≥ 95% of the rated weight (configurable); state of the relay: coil power-losing; closing of normally-closed contact; state of the buzzer: intermittent ringing (one second with two seconds interval)		
过载报警Overload alarm	≥额定重量的100%持续1秒断电 (可设置); 继电器状态: 线圈得电, 常闭触点断开; 蜂鸣器状态: 急促响2秒。 ≥ outage happens when 100% of the rated weight lasts one second (configurable); state of the relay: coil is powered, normally-closed contact is off; state of the buzzer: rapid ringing for two seconds.		
立即报警Instant alarm	≥额定重量的105% (立即断电) 继电器状态: 线圈得电, 常闭触点断开 ≥ at 105% of the rated weight (immediate outage); state of the relay: coil is powered, normally-closed contact is off		
解除报警Alarm relieve	当起吊物减少到额定重量以下时, 解除报警。Alarm relieves when the lifted object is lighter than the rated weight.		



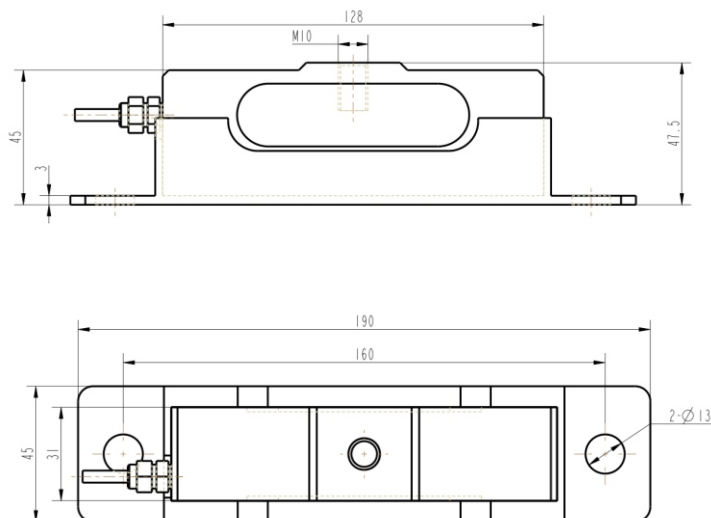
钢丝绳可配宽120mm、150mm、200mm

产品特点

Specification

- 电压: 12V-48V可接,完美解决使用环境电压不稳,比传统仪表更加稳定。
Wide operating voltage: suitable for 12V-48V; solve the problem of voltage instability of construction site; more stable than traditional instrument.
- 可同时夹6根绳索,适合各种电梯使用。
It can clip six ropes meanwhile, fit for all kinds of elevators.
- 测量精度: 高精度ADC,控制器测量精度优于1%,优于传统模拟信号仪表。
Measurement accuracy: high accuracy ADC, the measurement accuracy of the controller is over 1%, and is better than traditional analog signal instrument.
- 精美的外观设计、工程增强塑料外壳,美观经久耐用。
Elegant appearance design, engineering, reinforced plastic shell, beautiful and durable.
- 显示: 四位数码管,00.00-99.99,可作称重仪表使用,优于传统3位显示。
Display: four-digit nixie tube; 00.00-99.99, also works as weighing instrument, which is superior to traditional three-digit display.
- 重量显示: 按起重吊起的实际重量显示,起重行业分辨率达10kg。
Weight display: display actual lifted weight; the industrial resolution ratio is 10kg.
- 一路继电器常闭触点(常开可选)切断或接通电路,可外接蜂鸣器(选配)。
Cut off or switch on circuit by normally-closed contact (normally open optional) of single-channel relay; external buzzer can be connected (optional).
- 调试极为方便,可进行实物标定和无砝码标定,实现一键重量修正功能。
A real material calibration and debugging is very convenient, can be carried out without calibration weights, a key to achieve weight correction function.

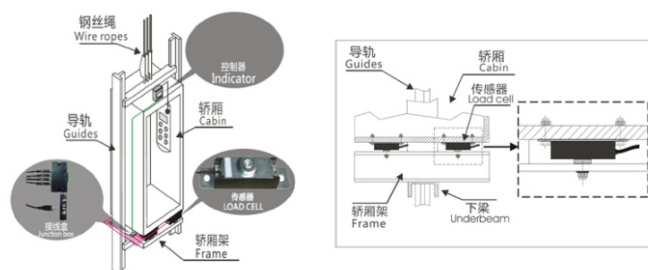
DQQ01



DQQ01安装方便,适用于各种电梯称重、限载装置

DQQ01 Easy installment, can be fit for all kinds of elevators, limiting device

接线方式 Circuit Diagram



主要技术指标 Specification

额定载荷Rated load (E _{max})	800kg	绝缘阻抗Insulation resistance	≥5000MΩ
灵敏度 Sensitivity	2.0±0.003% <i>mV/V</i>	工作温度范围Operating Temp Range	(-30~+70)°C
综合误差Combined error	±0.02 % F.S	安全过载 Safe load limit	150%F.S
蠕变 (30分钟) Creep/30min	±0.02 % F.S/30min	极限过载 Ultimate over load	250%F.S
零点平衡Zero balance	±1 % F.S	推荐激励电压 Recommend excitation	10~12V(DC or AC)
零点温度影响TCO	±0.02 % F.S/10°C	最大激励电压 Max excitation	15V DC
输出温度影响TC SPAN	±0.02 % F.S/10°C	密封等级 Protection Class	IP68
输入阻抗Input resistance	1000±10Ω	材质 Material	铝合金Aluminium alloy
输出阻抗Output resistance	1000±3Ω	电缆 Cable	USB线 Length:2.5m