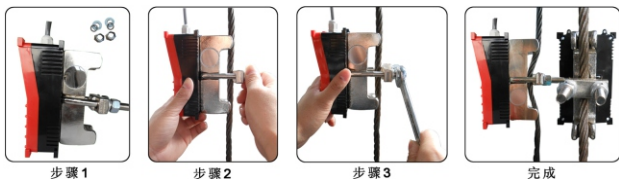


**INP起重机重量限制器适用于钢丝绳葫芦起重机、电梯、施工升降机及相关设备**

INP Applied to wire rope hoist elevator, construction elevator and related equipment

**安装方式**

**Installation example**



**产品特点**  
**Specification**

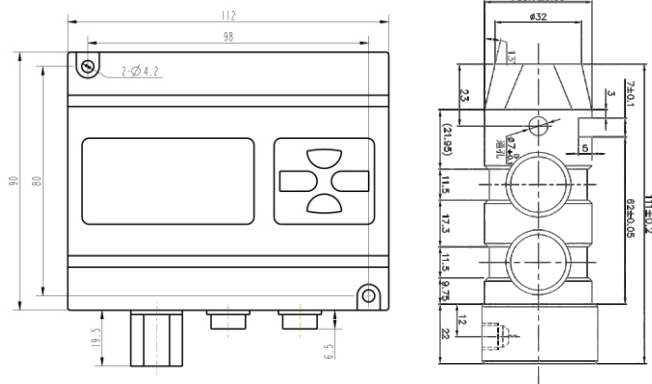
- ◆ 专利外形，斜角度查看，安装简单方便。  
Patent appearance, oblique angle checking, easy to install.
- ◆ 宽电压：110V-440V可接，完美解决使用环境电压不稳，比传统仪表更加稳定。  
Wide voltage: 110V-440V, perfectly solve instable site voltage, more stable than traditional indicators.
- ◆ 测量精度：高精度ADC，控制器测量精度优于1%，优于传统模拟信号仪表。  
Measurement Accuracy: high accuracy ADC, controller measurement accuracy better than 1%, superior to traditional analog signal indicators.
- ◆ 显示：4位数码管，00.00-99.99，可实现高精度称重。  
Display: 4 digital tube, 00.00-99.99, can achieve the high accuracy weighing.
- ◆ 重量显示：按起重吊起的实际重量显示，起重行业分辨率达10kg  
Weight display: according to the lifting hoist to display actual weight, the resolution ratio attaches to 10KG in crane industry.
- ◆ 一路继电器常闭触点(常开可选)切断或接通电路。  
One way relay normally closed contact (NC/NO) for off-on circuit.
- ◆ 调试极为方便，实物标定，实现一键重量修正功能，调试简便。  
Convenient to debugging, weight calibration, just push one button to correct all weight indication.
- ◆ 可夹直径24MM以下的任意钢丝绳进行测量。  
It Can be clamped under 24mm diameter wire rope.

**产品技术参数**

**Technical parameters**

项目Item	参数Parameter	项目Item	参数Parameter
显示方式Display mode	4位数码管显示4-digit Nixie tube display	额定载荷Rated load	1-32t
工作电压Working voltage	AC110-440V/DC12-36V	传感器工作电压Sensor working voltage	DC5-12V
工作温度Working temperature	-20~60℃	传感器灵敏度Sensitivity of the sensor	1.0000mV/v
工作湿度Operating humidity	95%	安装方式Installation	夹式Clip type
综合误差Comprehensive error	≤1%F.S	动作误差Action error	≤1%F.S
报警输出Alarm output	AC250V/7A	蜂鸣器Buzzer	≥90dB
过载预警Overload early warning	≥额定重量的95% (可设置); 继电器状态: 线圈失电, 常闭触点闭合; 蜂鸣器状态: 断续响 (1秒, 间隔2秒) ≥ 95% of the rated weight (configurable); state of the relay: coil power-losing; closing of normally-closed contact; state of the buzzer: intermittent ringing (one second with two seconds interval)		
过载报警Overload alarm	≥额定重量的100%持续1秒断电 (可设置); 继电器状态: 线圈得电, 常闭触点断开; 蜂鸣器状态: 急促响2秒。 ≥ outage happens when 100% of the rated weight lasts one second (configurable); state of the relay: coil is powered, normally-closed contact is off; state of the buzzer: rapid ringing for two seconds.		
立即报警Instant alarm	≥额定重量的105% (立即断电) 继电器状态: 线圈得电, 常闭触点断开 ≥ at 105% of the rated weight (immediate outage); state of the relay: coil is powered, normally-closed contact is off		
解除报警Alarm relieve	当起吊物减少到额定重量以下时, 解除报警。Alarm relieves when the lifted object is lighter than the rated weight.		

# 318-A(CXZ40)

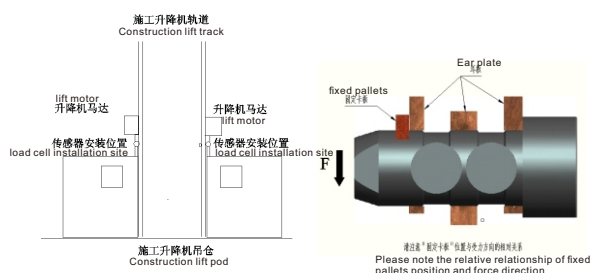


## 318-A(CXZ40)专门针对建筑施工升降机开发的保护装置，能在设备载重运行中提供声、光、电报警

318-A(CXZ40) is a safeguard device specially called for construction hoist, it can give an alarm of voice, light and electricity when equipment in operation

### 安装方式

#### Installation example



## 产品特点 Specification

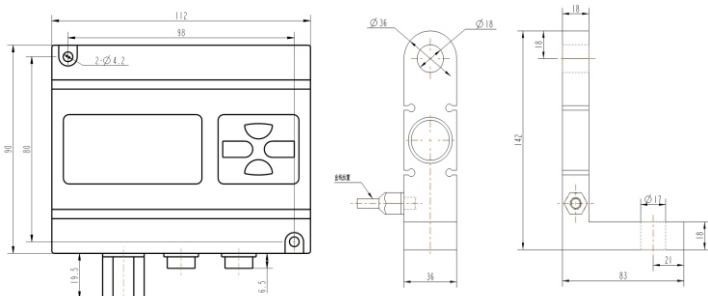
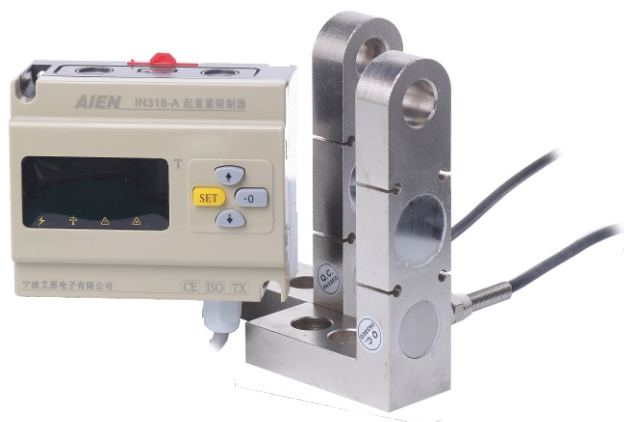
- ◆ 经典塑料外壳，安装方便，防护性好。  
Classic plastic shell, convenience to install, perfect protection.
- ◆ 宽电压：110V-440V可接，完美解决工地电压不稳，比传统仪表更加稳定。  
Wide voltage: AC110-440V, perfectly fix instable site voltage, more stable than traditional indicator.
- ◆ 测量精度：高精度ADC，控制器测量精度优于1%，优于传统模拟信号仪表。  
Measurement Accuracy: High accuracy ADC, controller measurement accuracy better than 1%, superior to traditional analog signal indicators.
- ◆ 显示：4位数码管，00.00-99.99，可实现高精度称重。  
Display: 4 digital tube, 00.00-99.99, it can achieve high accuracy weighing result.
- ◆ 重量显示：按起重吊起的实际重量显示，起重行业分辨率达10kg。  
Weight display: according to the lifting hoist to display actual weight, the resolution ratio attaches to 10KG in crane industry.
- ◆ 一路继电器常闭触点（常开可选）切断或接通电路。  
One way relay normally closed contact (NC/NO) for off-on circuit.
- ◆ 调试极为方便，可实现实物及无砝码标定，一键重量修正功能。  
Convenient for debugging, achieve theory calibration and without weight calibration, push one button to correct all weight data.

### 产品技术参数

#### Technical parameters

项目Item	参数Parameter	项目Item	参数Parameter
显示方式Display mode	4位数码管显示4-digit Nixie tube display	额定载荷Rated load	1-6t
工作电压Working voltage	AC110-440V/DC12-36V	传感器工作电压Sensor working voltage	DC5-12V
工作温度Working temperature	-20~60°C	传感器灵敏度Sensitivity of the sensor	1.0000Mv/v
工作湿度Operating humidity	95%	安装方式Installation	卡槽式Slot type
综合误差Comprehensive error	≤1%F.S	动作误差Action error	≤1%F.S
报警输出Alarm output	AC250V/7A	蜂鸣器Buzzer	≥90dB
过载预警Overload early warning	≥额定重量的95%（可设置）；继电器状态：线圈失电，常闭触点闭合；蜂鸣器状态：断续响（1秒，间隔2秒） ≥ 95% of the rated weight (configurable); state of the relay: coil power-losing; closing of normally-closed contact; state of the buzzer: intermittent ringing (one second with two seconds interval)		
过载报警Overload alarm	≥额定重量的100%持续1秒断电（可设置）；继电器状态：线圈得电，常闭触点断开；蜂鸣器状态：急促响2秒。 ≥ outage happens when 100% of the rated weight lasts one second (configurable); state of the relay: coil is powered, normally-closed contact is off; state of the buzzer: rapid ringing for two seconds.		
立即报警Instant alarm	≥额定重量的105%（立即断电）继电器状态：线圈得电，常闭触点断开 ≥ at 105% of the rated weight (immediate outage); state of the relay: coil is powered, normally-closed contact is off		
解除报警Alarm relieve	当起吊物减少到额定重量以下时，解除报警。Alarm relieves when the lifted object is lighter than the rated weight.		

# 318-A (CLT01)

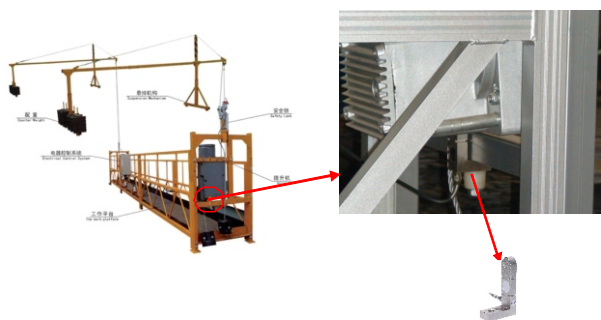


## 318-A (CLT01) 超载限制器专门针对建筑施工吊篮开发的保护装置，能在设备载重运行中提供声、光、电报警

318-A (CLT01) This overloading alerter constitutes a resistance strain weighing sensor and an intelligent control instrument. As a safeguarding appliance for elevator, it is designed to provide sound alarm, light alarm electric alarm.

### 安装方式

#### Installation example



### 产品技术参数

#### Technical parameters

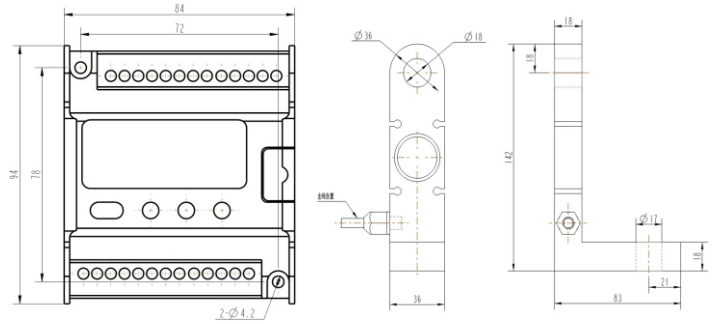
项目Item	参数Parameter	项目Item	参数Parameter
显示方式Display mode	4位数数码管显示4-digit Nixie tube display	额定载荷Rated load	0-2t
工作电压Working voltage	AC110-440V/DC12-36V	传感器工作电压Sensor working voltage	DC5-12V
工作温度Working temperature	-20~60°C	传感器灵敏度Sensitivity of the sensor	1.0000Mv/v
工作湿度Operating humidity	95%	安装方式Installation	卡槽式Slot type
综合误差Comprehensive error	≤1%F.S	动作误差Action error	≤1%F.S
报警输出Alarm output	AC250V/7A	蜂鸣器Buzzer	≥90dB

过载预警Overload early warning	≥额定重量的95% (可设置)；继电器状态：线圈失电，常闭触点闭合；蜂鸣器状态：断续响（1秒，间隔2秒） ≥ 95% of the rated weight (configurable) ; state of the relay: coil power-losing; closing of normally-closed contact; state of the buzzer: intermittent ringing (one second with two seconds interval)
过载报警Overload alarm	≥额定重量的100%持续1秒断电 (可设置)；继电器状态：线圈得电，常闭触点断开；蜂鸣器状态：急促响2秒。 ≥ outage happens when 100% of the rated weight lasts one second (configurable) ; state of the relay: coil is powered, normally-closed contact is off; state of the buzzer: rapid ringing for two seconds.
立即报警Instant alarm	≥额定重量的105% (立即断电) 继电器状态：线圈得电，常闭触点断开 ≥ at 105% of the rated weight (immediate outage) ; state of the relay: coil is powered, normally-closed contact is off
解除报警Alarm relieve	当起吊物减少到额定重量以下时，解除报警。Alarm relieves when the lifted object is lighter than the rated weight.

### 产品特点 Specification

- 完美的建筑施工吊篮起重量限制解决方案。经典塑料外壳，安装方便，防护性好。  
Perfect construction basket weight limit solution. Classic plastic shell, easy to install, good protection.
- 宽电压：110V-440V可接，完美解决工地电压不稳，比传统仪表更加稳定。  
Wide voltage: AC110-440V, perfectly fix instable site voltage, more stable than traditional indicator.
- 测量精度：高精度ADC，控制器测量精度优于1%，优于传统模拟信号仪表。  
Measurement Accuracy: High accuracy ADC, controller measurement accuracy better than 1%, superior to traditional analog signal indicators.
- 显示：4位数数码管，00.00-99.99，可实现高精度称重。  
Display: 4 digital tube, 00.00-99.99, it can achieve high accuracy weighing result.
- 重量显示：按起重吊起的实际重量显示，起重行业分辨率达10kg。  
Weight display: according to the lifting hoist to display actual weight, the resolution ratio attaches to 10KG in crane industry.
- 一路继电器常闭触点 (常开可选) 切断或接通电路。  
One way relay normally closed contact (NC/NO) for off-on circuit.
- 调试极为方便，可实现实物及无砝码标定，一键重量修正功能。  
Convenient for debugging, achieve theory calibration and without weight calibration, push one button to correct all weight data.

# 318-B1(CLT01)

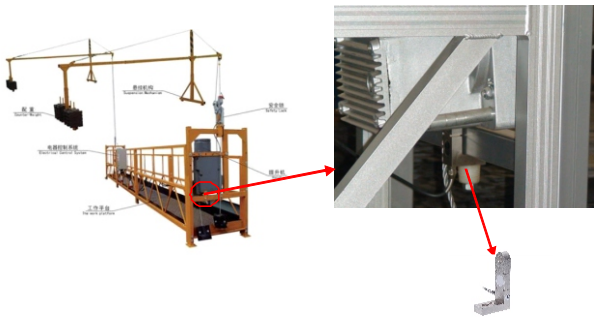


## 318-B1(CLT01) 超载限制器专门针对建筑施工吊篮开发的保护装置，能在设备载重运行中提供声、光、电报警

318-B1(CLT01) This overloading alerter constitutes a resistance strain weighing sensor and an intelligent control instrument. As a safeguarding appliance for elevator, it is designed to provide sound alarm, light alarm electric alarm.

### 安装方式

#### Installation example



### 产品技术参数

#### Technical parameters

项目Item	参数Parameter	项目Item	参数Parameter
显示方式Display mode	4位数码管显示4-digit Nixie tube display	额定载荷Rated load	0-2t
工作电压Working voltage	DC12-36V	传感器工作电压Sensor working voltage	DC5-12V
工作温度Working temperature	-20~60°C	传感器灵敏度Sensitivity of the sensor	1.0000Mv/v
工作湿度Operating humidity	95%	安装方式Installation	卡槽式Slot type
综合误差Comprehensive error	≤1%F.S	动作误差Action error	≤1%F.S
报警输出Alarm output	AC250V/7A	蜂鸣器Buzzer	≥90dB
过载预警Overload early warning	≥额定重量的95%（可设置）；继电器状态：线圈失电，常闭触点闭合；蜂鸣器状态：断续响（1秒，间隔2秒） ≥95% of the rated weight (configurable); state of the relay: coil power-losing; closing of normally-closed contact; state of the buzzer: intermittent ringing (one second with two seconds interval)		
过载报警Overload alarm	≥额定重量的100%持续1秒断电（可设置）；继电器状态：线圈得电，常闭触点断开；蜂鸣器状态：急促响2秒。 ≥ outage happens when 100% of the rated weight lasts one second (configurable); state of the relay: coil is powered, normally-closed contact is off; state of the buzzer: rapid ringing for two seconds.		
立即报警Instant alarm	≥额定重量的105%（立即断电）继电器状态：线圈得电，常闭触点断开 ≥ at 105% of the rated weight (immediate outage); state of the relay: coil is powered, normally-closed contact is off		
解除报警Alarm relieve	当起吊物减少到额定重量以下时，解除报警。Alarm relieves when the lifted object is lighter than the rated weight.		

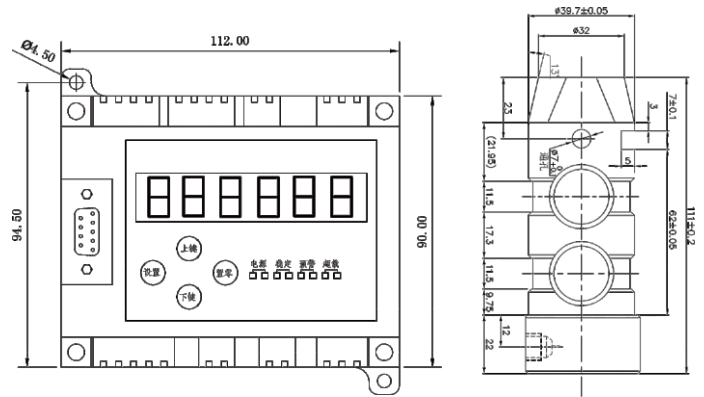
### 产品特点

#### Specification

- ◆ 完美的建筑施工吊篮起重量限制解决方案。经典塑料外壳，安装方便，防护性好。  
Perfect construction basket weight limit solution. Classic plastic shell, easy to install, good protection.
- ◆ 低压：DC12-36V可接，完美解决工地电压不稳，比传统仪表更加稳定。  
Wide voltage: AC110-440V, perfectly fix instable site voltage, more stable than traditional indicator.
- ◆ 测量精度：高精度ADC，控制器测量精度优于1%，优于传统模拟信号仪表。  
Measurement Accuracy: High accuracy ADC, controller measurement accuracy better than 1%, superior to traditional analog signal indicators.
- ◆ 显示：4位数码管，00.00-99.99，可实现高精度称重。  
Display: 4 digital tube, 00.00-99.99, it can achieve high accuracy weighing result.
- ◆ 重量显示：按起重吊起的实际重量显示，起重行业分辨率达10kg。  
Weight display: according to the lifting hoist to display actual weight, the resolution ratio attaches to 10KG in crane industry.
- ◆ 三路继电器常闭触点（常开可选）切断或接通电路。  
Three way relay normally closed contact (NC/NO) for off- on circuit.
- ◆ 调试极为方便，可实现实物及无砝码标定，一键重量修正功能。  
Convenient for debugging, achieve theory calibration and without weight calibration, push one button to correct all weight data.



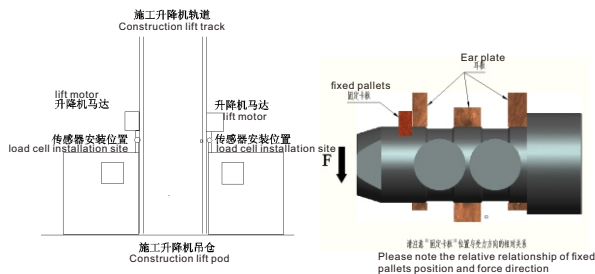
# 318-C(CXZ40)



## 318-C(CXZ40)专门针对建筑施工升降机开发的保护装置，能在设备载重运行中提供声、光、电报警

318-C(CXZ40) is a safeguard derive specially cally aim at construction hoist,It can give an alarm of voice, light and electricity when equipment in operation

## 安装方式 Installation example



## 产品特点

### Specification

- ◆ 标准卡槽导轨式外壳，阻燃ABS材料，安装方便、耐火。  
Standard duct shell railed, ABS fire-resistance material, convenient installation, fire-resistance.
- ◆ 开关电源输入，完美解决工地电压不稳，比传统仪表更加稳定。  
Switched power input, perfectly solve instable site voltage, more stable than traditional indicator.
- ◆ 测量精度：高精度ADC，控制器测量精度优于1%，优于传统模拟信号仪表。  
Measurement Accuracy: High accuracy ADC, controller measurement accuracy better than 1%, superior to traditional analog signal indicators.
- ◆ 内置电池，断电情况下可工作8小时，并可进行自充电，完美解决开门断电无法工作情况，360°无死角安全监控防超载。  
Built-in battery, it can still work eight hours under power outages and can be charged automatically. 360°C no-dead angle security monitored for anti-overload.
- ◆ 显示：6位数数码管，0000.00-9999.99，可作称重仪表使用，优于传统4位显示。  
Display: 6 digital tube, 00.00-99.99, it can achieve high accuracy weighing result.
- ◆ 重量显示：按起重吊起的实际重量显示，起重行业分辨率达1kg。  
Weight display: according to the lifting hoist to display actual weight, the resolution ratio attaches to 1KG in crane industry.
- ◆ 一路继电器常闭触点（常开可选）切断或接通电路，可外接蜂鸣器及分屏显示（选配）。  
One way relay normally closed contact (NC/NO) for off-on circuit. The external buzzer and split-screen display can be outer connected (optional).
- ◆ 支持RS232\485通信、可外接大屏幕及上位机功能。  
Support RS232\485 communications, external large screen and PC functions.
- ◆ 黑匣子功能：带超载记录功能，记录每一个超载数据及运行数据，达4000条。  
Black Box Function: overload recording function, restore every overload data and the operating data attaches to 4000pcs.
- ◆ 可实现实物及无砝码标定，一键重量修正功能。  
Convenient for debugging, achieve theory calibration and without weight calibration, push one button to correct all weight data.

## 产品技术参数

### Technical parameters

项目Item	参数Parameter	项目Item	参数Parameter
显示方式Display mode	6位数数码管显示6-digit Nixie tube display	额定载荷Rated load	2t
工作电压Working voltage	AC180-260V	传感器工作电压Sensor working voltage	DC5-12V
工作温度Working temperature	-20~60°C	传感器灵敏度Sensitivity of the sensor	1.0000Mv/v
工作湿度Operating humidity	95%	安装方式Installation	卡槽式Slot type
综合误差Comprehensive error	≤1%F.S	动作误差Action error	≤1%F.S
报警输出Alarm output	AC250V/7A	蜂鸣器Buzzer	≥90dB
过载预警Overload early warning	≥额定重量的95%（可设置）；继电器状态：线圈失电，常闭触点闭合；蜂鸣器状态：断续响（1秒，间隔2秒） ≥95% of the rated weight (configurable); state of the relay: coil power-losing; closing of normally-closed contact; state of the buzzer: intermittent ringing (one second with two seconds interval)		
过载报警Overload alarm	≥额定重量的100%持续1秒断电（可设置）；继电器状态：线圈得电，常闭触点断开；蜂鸣器状态：急促响2秒。 ≥ outage happens when 100% of the rated weight lasts one second (configurable); state of the relay: coil is powered, normally-closed contact is off; state of the buzzer: rapid ringing for two seconds.		
立即报警Instant alarm	≥额定重量的105%（立即断电）继电器状态：线圈得电，常闭触点断开 ≥ at 105% of the rated weight (immediate outage); state of the relay: coil is powered, normally-closed contact is off		
解除报警Alarm relieve	当起吊物减少到额定重量以下时，解除报警。Alarm relieves when the lifted object is lighter than the rated weight.		

# 318-D<sub>2</sub>(CXZ40)

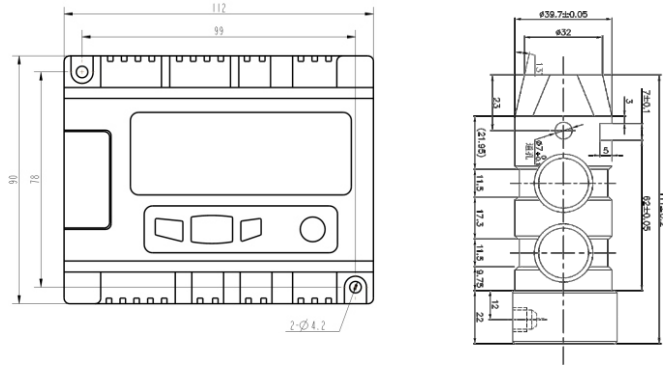
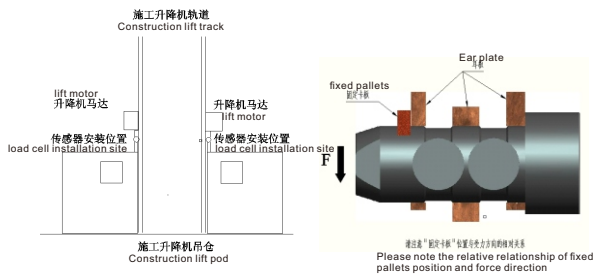


**318-D<sub>2</sub>(CXZ40)专门针对建筑施工升降机开发的保护装置，能在设备载重运行中提供声、光、电报警**

318-D<sub>2</sub>(CXZ40) is a safeguard derive specially cally aim at construction hoist,It can give an alarm of voice, light and electricity when equipment in operation

## 安装方式

### Installation example



## 产品特点 Specification

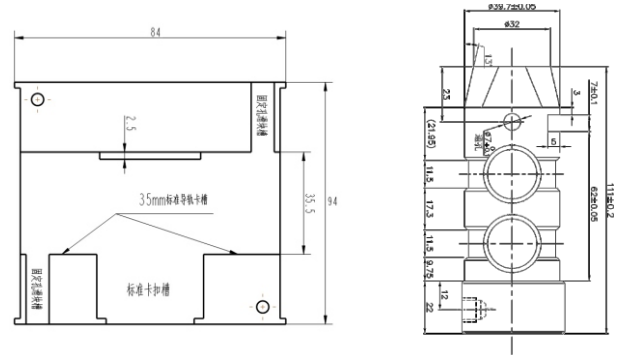
- ◆ 全中/英文显示，操作方便直观。  
All chinese or English display, Easy to operate and intuitive
- ◆ 标准卡槽导轨式外壳，阻燃ABS材料，安装方便、耐火。  
Standard duct shell railed,ABS fire-resistance material,convenient installation,fire-resistance.
- ◆ 工频电源输入，完美解决各种工矿电压环境，比传统仪表更加稳定。  
Power frequency input, perfectly solve all kinds of in dustrial and mining voltage environ ment;
- ◆ 测量精度：高精度ADC，控制器测量精度优于1%，优于传统模拟信号仪表。  
Measurement Accuracy: High accuracy ADC, controller measurement accuracy better than 1%,superior to traditional analog signal indicators.
- ◆ 内置电池，断电情况下可工作8小时，并可进行自充电，完美解决开门断电无法工作情况，360°无死角安全监控防超载。  
Built-in battery, it can still work eight hours under power outages and can be charged automatically. 360° no- dead angle security monitored for anti-overload.
- ◆ 显示：6位液晶背光显示，0000.00-9999.99，高精度称重。  
Display: 6 LCD backlight display, 0000.00-9999.99, high precision weighing.
- ◆ 重量显示：按起重吊起的实际重量显示，起重行业分辨率达1kg。  
Weight display: according to the lifting hoist to display actual weight, the resolution ratio attaches to 1KG in crane industry.
- ◆ 一路继电器常闭触点（常开可选）切断或接通电路，可外接蜂鸣器及分屏显示（选配）。  
One way relay normally closed contact (NC/NO) for off- on circuit.The external buzzer and split-screen display can be outer connected(optional)
- ◆ 支持RS232\485通信，可外接大屏幕及上位机功能。  
Support RS232 \ 485 communications, external large screen and PC functions.
- ◆ 支持0-5V,4-20mA模拟量输出。  
Support 0-5V,4-20mA analog output
- ◆ 可实现实物及无砝码标定，一键重量修正功能。  
Convenient for debugging, achieve theory calibration and without weight calibration, push one button to correct all weight data.

## 产品技术参数

### Technical parameters

项目Item	参数Parameter	项目Item	参数Parameter
显示方式Display mode	6位数码管显示6-digit Nixie tube display	额定载荷Rated load	1-6t
工作电压Working voltage	AC180-260V	传感器工作电压Sensor working voltage	DC5-12V
工作温度Working temperature	-20~60°C	传感器灵敏度Sensitivity of the sensor	1.0000mV/v
工作湿度Operating humidity	95%	安装方式Installation	卡槽式Slot type
综合误差Comprehensive error	≤1%F.S	动作误差Action error	≤1%F.S
报警输出Alarm output	AC250V/7A	蜂鸣器Buzzer	≥90dB
过载预警Overload early warning	≥额定重量的95%（可设置）；继电器状态：线圈失电，常闭触点闭合；蜂鸣器状态：断续响（1秒，间隔2秒） ≥95% of the rated weight (configurable) ; state of the relay: coil power-losing; closing of normally-closed contact; state of the buzzer: intermittent ringing (one second with two seconds interval)		
过载报警Overload alarm	≥额定重量的100%持续1秒断电（可设置）；继电器状态：线圈得电，常闭触点断开；蜂鸣器状态：急促响2秒。 ≥ outage happens when 100% of the rated weight lasts one second (configurable) ; state of the relay: coil is powered, normally-closed contact is off; state of the buzzer: rapid ringing for two seconds.		
立即报警Instant alarm	≥额定重量的105%（立即断电）继电器状态：线圈得电，常闭触点断开 ≥ at 105% of the rated weight (immediate outage) ; state of the relay: coil is powered, normally-closed contact is off		
解除报警Alarm relieve	当起吊物减少到额定重量以下时，解除报警。Alarm relieves when the lifted object is lighter than the rated weight.		

# LMT(CXZ40)

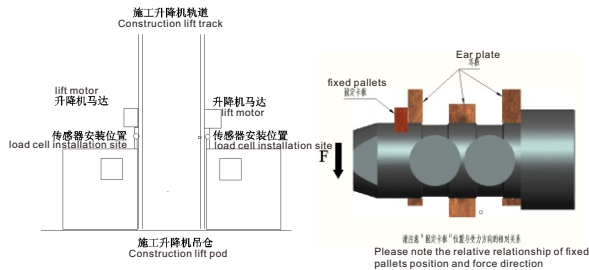


## LMT(CXZ40)专门针对建筑施工升降机开发的保护装置，能在设备载重运行中提供声、光、电报警

LMT(CXZ40) is a safeguard derive specially cally aim at construction hoist,It can give an alarm of voice, light and electricity when equipment in operation

### 安装方式

#### Installation example



### 产品特点

#### Specification

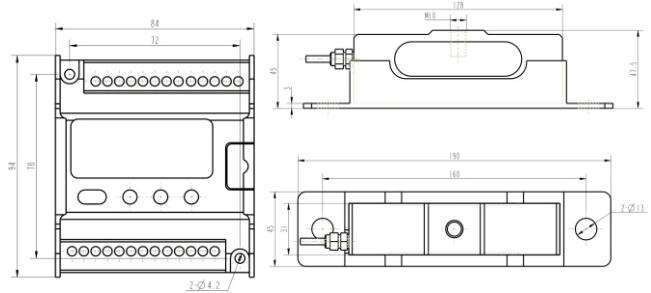
- ◆ 经典塑料外壳，安装方便，防护性好。  
Classic plastic shell, convenience to install, perfect protection.
- ◆ 电压：220V可接，完美解决工地电压不稳，比传统仪表更加稳定。  
voltage: AC220V, perfectly fix instable site voltage, more stable than traditional indicator.
- ◆ 测量精度：高精度ADC，控制器测量精度优于1%，优于传统模拟信号仪表。  
Measurement Accuracy: High accuracy ADC, controller measurement accuracy better than 1%, superior to traditional analog signal indicators.
- ◆ 显示：4位数数码管，00.00-99.99，可实现高精度称重。  
Display: 4 digital tube, 00.00-99.99, it can achieve high accuracy weighing result.
- ◆ 重量显示：按起重吊起的实际重量显示，起重行业分辨率达10kg。  
Weight display: according to the lifting hoist to display actual weight, the resolution ratio attaches to 10KG in crane industry.
- ◆ 一路继电器常闭触点（常开可选）切断或接通电路。  
One way relay normally closed contact (NC/NO) for off-on circuit.
- ◆ 调试极为方便，可实现实物及无砝码标定，一键重量修正功能。  
Convenient for debugging, achieve theory calibration and without weight calibration, push one button to correct all weight data.

### 产品技术参数

#### Technical parameters

项目Item	参数Parameter	项目Item	参数Parameter
显示方式Display mode	4位数数码管显示4-digit Nixie tube display	额定载荷Rated load	1-6t
工作电压Working voltage	AC220V	传感器工作电压Sensor working voltage	DC5-12V
工作温度Working temperature	-20~60℃	传感器灵敏度Sensitivity of the sensor	1.0000Mv/v
工作湿度Operating humidity	95%	安装方式Installation	卡槽式Slot type
综合误差Comprehensive error	≤1%F.S	动作误差Action error	≤1%F.S
报警输出Alarm output	AC250V/7A	蜂鸣器Buzzer	≥90dB
过载预警Overload early warning	≥额定重量的95%（可设置）；继电器状态：线圈失电，常闭触点闭合；蜂鸣器状态：断续响（1秒，间隔2秒） ≥ 95% of the rated weight (configurable); state of the relay: coil power-losing; closing of normally-closed contact; state of the buzzer: intermittent ringing (one second with two seconds interval)		
过载报警Overload alarm	≥额定重量的100%持续1秒断电（可设置）；继电器状态：线圈得电，常闭触点断开；蜂鸣器状态：急促响2秒。 ≥ outage happens when 100% of the rated weight lasts one second (configurable); state of the relay: coil is powered, normally-closed contact is off; state of the buzzer: rapid ringing for two seconds.		
立即报警Instant alarm	≥额定重量的105%（立即断电）继电器状态：线圈得电，常闭触点断开 ≥ at 105% of the rated weight (immediate outage); state of the relay: coil is powered, normally-closed contact is off		
解除报警Alarm relieve	当起吊物减少到额定重量以下时，解除报警。Alarm relieves when the lifted object is lighter than the rated weight.		

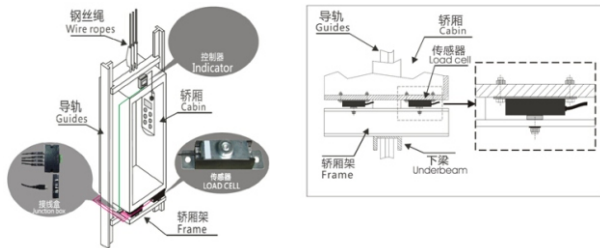
**DQQ**



**DQQ安装方便,适用于各种电梯称重、限载装置**

DQQ Easy installment, can be fit for all kinds of elevators, limiting device

**安装方式  
Installation example**



**产品技术参数  
Technical parameters**

项目Item	参数Parameter	项目Item	参数Parameter
显示方式Display mode	4位数码管显示4-digit Nixie tube display	额定载荷Rated load	3.2t
工作电压Working voltage	AC12-36V	传感器工作电压Sensor working voltage	DC5-12V
工作温度Working temperature	-20~60℃	传感器灵敏度Sensitivity of the sensor	2.0000Mv/v
工作湿度Operating humidity	95%	安装方式Installation	卡槽式Slot type
综合误差Comprehensive error	≤1%F.S	动作误差Action error	≤1%F.S
报警输出Alarm output	AC250V/7A	蜂鸣器Buzzer	≥90dB
过载预警Overload early warning	≥额定重量的95% (可设置); 继电器状态: 线圈失电, 常闭触点闭合; 蜂鸣器状态: 断续响 (1秒, 间隔2秒) ≥ 95% of the rated weight (configurable); state of the relay: coil power-losing; closing of normally-closed contact; state of the buzzer: intermittent ringing (one second with two seconds interval)		
过载报警Overload alarm	≥额定重量的100%持续1秒断电 (可设置); 继电器状态: 线圈得电, 常闭触点断开; 蜂鸣器状态: 急促响2秒。 ≥ outage happens when 100% of the rated weight lasts one second (configurable); state of the relay: coil is powered, normally-closed contact is off; state of the buzzer: rapid ringing for two seconds.		
立即报警Instant alarm	≥额定重量的105% (立即断电) 继电器状态: 线圈得电, 常闭触点断开 ≥ at 105% of the rated weight (immediate outage); state of the relay: coil is powered, normally-closed contact is off		
解除报警Alarm relieve	当起吊物减少到额定重量以下时, 解除报警。 Alarm relieves when the lifted object is lighter than the rated weight.		

**产品特点  
Specification**

- ◆ 精美外观, 壳体采用工程阻燃ABS塑料, 坚固耐用。  
Elegant appearance, using flame retardant ABS engineering plastics shell, solid and durable.
- ◆ 传感器采用全桥, 可单独使用, 更高精度。  
The sensor adopts full bridge, which can be used independently and with higher precision.
- ◆ 安装方便, 采用导轨和二种螺丝孔位固定, 结构紧凑, 产品尺寸仅为84MM\*94MM。可满足小空间用。  
Easy installation, use the fixed guide rail and two screw holes, compact structure, product size is 84 mm \* 94 mm only. Can be installed in small space.
- ◆ 采用高精度24位专用A/D转换器及工业级单片机, 产品可适用于衡器行业。  
Using high precision 24 bit dedicated A/D converter and industrial grade: single chip microcomputer.
- ◆ 操作设置简单, 提供实物及无砝码学习二种学习方法, 满足不用场合使用。  
Simple operation, providing two kinds of learning methods of physical and non-weight learning.
- ◆ 采用4位高亮数码管显示, 可显示0000-9999, 并有红色和翠绿色可选。  
The four bite digital tube display, can display: 0000-9999.
- ◆ DC/AC12-36V宽电压输入, 采用工业级电源模块, 正负任接。  
DC/AC12-36 V wide voltage input, using industrial-grade power supply module, plus or minus any answer.
- ◆ 提供3路继电器输出, 可满足多点控制需求。  
Provide 3 ways relay output, can meet the demand of multi-point control.
- ◆ 提供1路控制DA12V信号输入及外接蜂鸣器。  
Provide 1 way control DA12V signal input and the external buzzer



# OCS-QZ

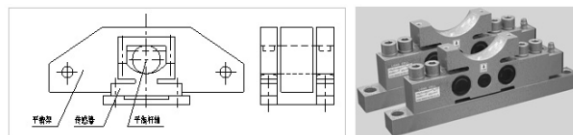


OCS-QZ 系列电子天车称是我公司研制生产的专门用于被吊物件处于悬挂状态下进行称重计量的全电子称重装置。它通过在原有天车的基础上进行机械技术改造，加装称重传感器和称重仪表等电子部件，而实现了对吊装物件的自动称量。

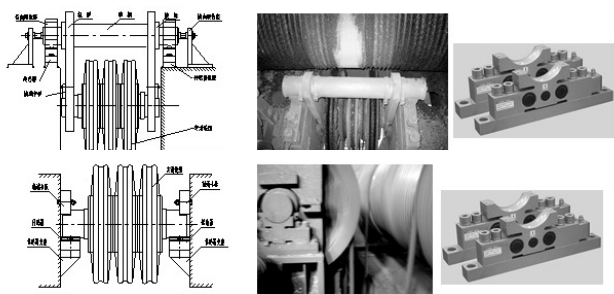
与电子吊钩称相比，OCS-QZ 系列电子天车称具有以下优点：

- 1、不影响天车原起吊高度,使用寿命长。
- 2、直接利用天车上380V AC或220V Ac电源，不必频繁充电和更换电池。
- 3、操作简单，维护方便。
- 4、耐冲击，振动，适合于高温环境（260℃以内）。
- 5、高清晰度大屏幕显示、清晰直观。
- 6、抗强电磁干扰，满足恶劣环境下使用。
- 7、可多台天平秤进行无线联网，数据统一处理。
- 8、可采用无线发射形式，便于地面人员操作使用和监控。

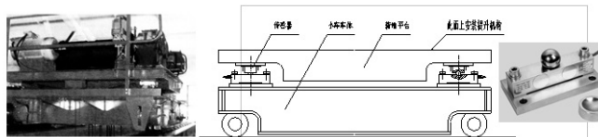
### 方案三 定滑轮支架上安装传感器或平衡杆上安装传感器的秤体结构方案



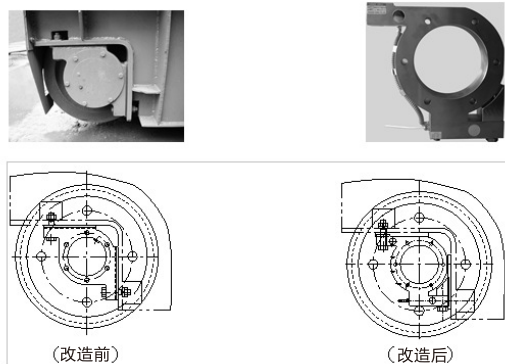
### 方案一 传感器轴压式秤体结构方案（最常用）



### 方案四 加装平台秤的秤体结构方案



### 方案二 采用轴瓦传感器直接替代角型轴承座的秤体结构方案



### 方案五 串接钢轨式传感器的秤体结构方案



### 选用仪表



# OCS-GK

## ◆ 高精度集装箱称重系统简介

该系统于2009年开始着手前期调研和准备工作，历经3年之久的设计开发，经过大量的现场实践，先后开发了4代产品来不断满足该系统之需要，我们秉承客户至上、一流产品、创造价值、服务社会的理念来操作该项目，不断完善。

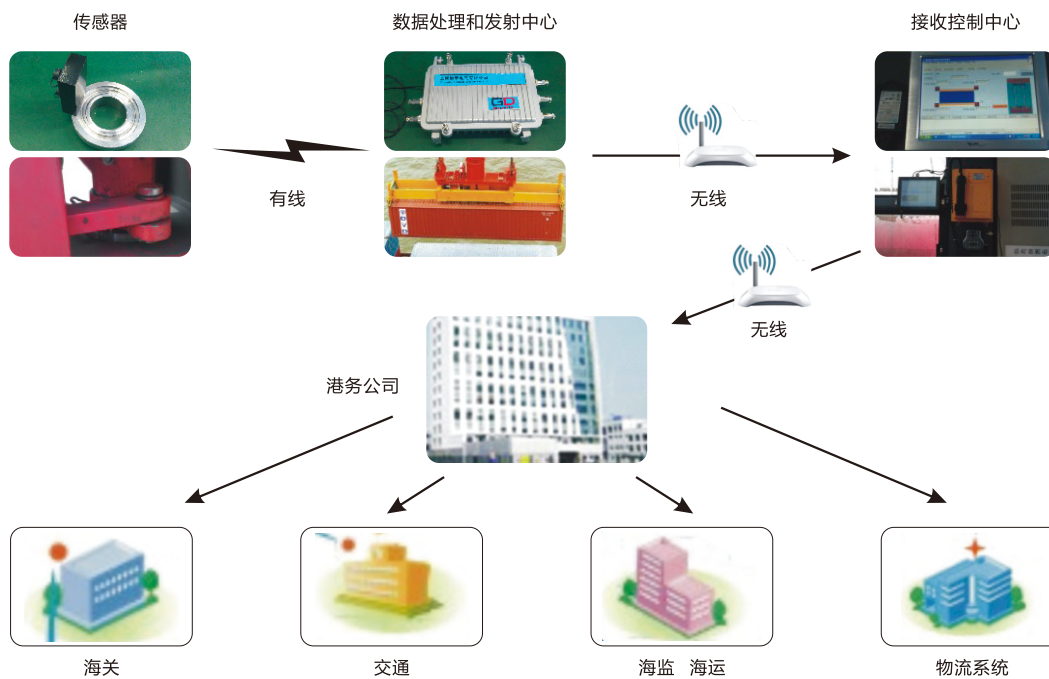
该高精度集装箱称重系统的推广和应用，将从源头上精准地反映出我国进出口贸易货物的数据信息，能为码头、船务、进出口企业、甚至交通运输、海关、海事等部门提供真实可靠的数据信息，纠正原有传送数据的信息误差。

## ◆ 产品组成

系统由高精度动态数字称重传感器、数据处理中心、无线传输设备、高性能平板电脑工控机及称重软件组成，可使整个系统安全可靠的工作在各种复杂环境的场合。

传感器大幅度提高使用安全的同时也提供了极为便利的安装要求，独有的数字化处理技术使得传感器具有低噪音、低漂移、高速率的稳定性和准确性，能够满足各种动态测量场合，对整个系统起着准确可靠的保障。

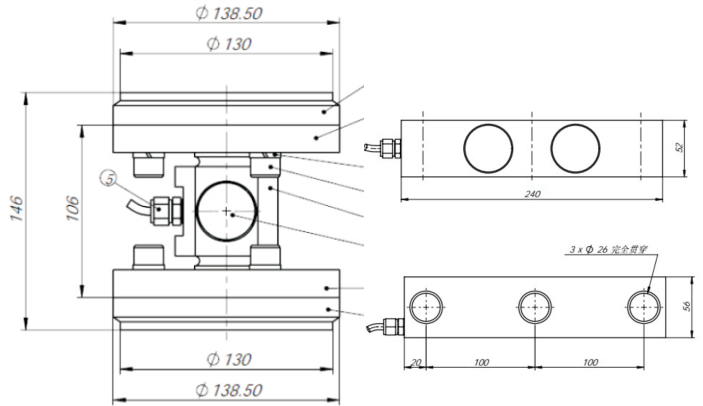
该系统还具有自诊断故障功能，吊装连接件使用寿命检测，数据独立加密保存，预留多种升级等功能，完成了安装、维护、数据存储保密等特有机制，真正做到了安全、便捷、高效。



## ◆ 产品图



# OCS-GF



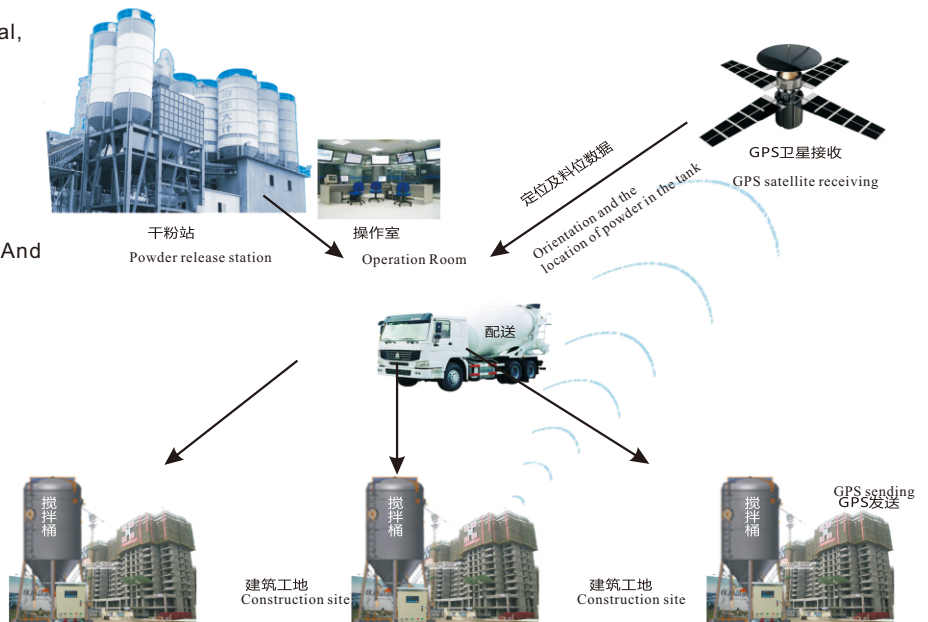
水泥干粉砂浆罐运营平台系统由电气控制柜、专用称重控制仪表、专用称重传感器、GPS收发终端、GPS 干粉砂浆运营管理软件等组成。系统用户可以第一时间掌握储、运、产、销等方面的数据，对干粉砂浆的储存和生产进行及时、有效的数据分析和决策，对运输和销售实现全天候、全方位的监控与管理。

The operation platform system of cement dry powder mortar tank is composed of electric control cabinet, Special weighing control instrument, special weighing sensor, GPS Send and receive terminal, GPS dry powder mortar operation management software and so on.

System users can master the data of storage, transportation and production for the first time, Storage and production of dry powder mortar Carry out timely and effective data analysis and decision making for transportation And achieve all-weather, all-round monitoring and management of transportation and sales.

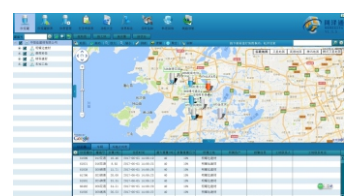
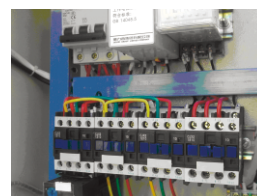
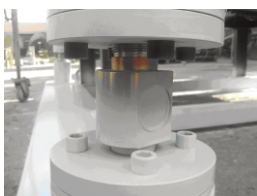
## 产品特点 Specification

- ◆ 实现高精度计量，可以达到工业衡器0.1%计量标准，可准确控制料位；  
It can achieve high precision measurement and attach to the standard of 0.1% industry weight
- ◆ 可实现自动化操作，节约人员成本；  
Achieve auto-operation, save the labor cost;
- ◆ 可进行缺料提醒，报警功能，及时补料，避免待料停工浪费；  
Remind the operator to charge the material when lack of material, alarm function, timely charging the material, avoid the time of waiting for the process of material;
- ◆ 可实现罐体安装GPS定位，达到远程控制操作；  
Remote control the operation using GPS location in material tank;
- ◆ 通过介面软件管理，一目了然，方便操作。  
It is easy for operation and checking through software.



### 部件组成 Component constitution

系统由传感器、仪表、控制箱及GPS组成。  
The system consists of load cell, indicator, controlling distribution board and GPS





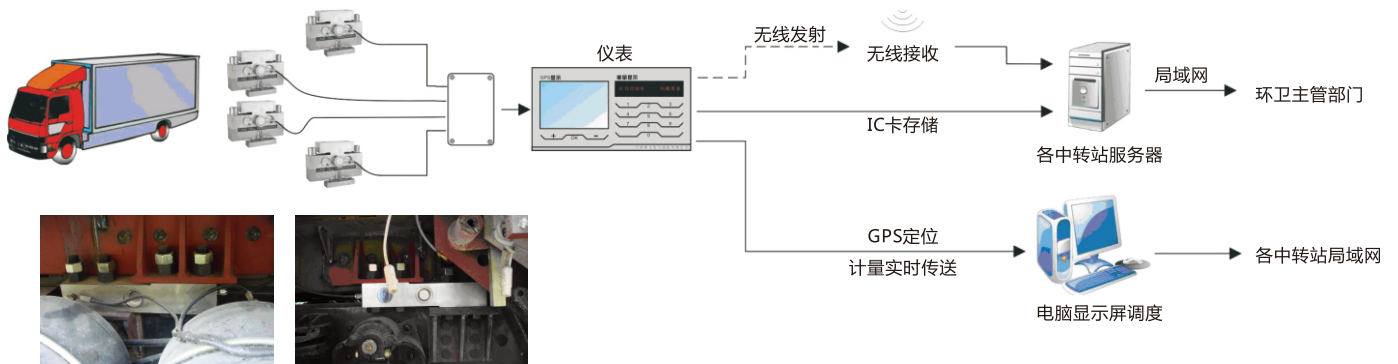
# OCS-QC

**方案一** 传统称重传感器，安装在汽车大梁上，适用平坦、固定路况。



**本车载量控制系统（简称CMCS）**主要应用环卫、煤炭、渣土车等领域，主要起到计量、超载、欠载等功能的运输控制。能有效地控制车辆的载重量，防止超载对车辆及道路造成的损坏，延长汽车的使用寿命，保护公路。对车辆的科学管理，对车辆地理位置及载重量进行实时监控，便于调度车辆作业，提高工作效率。有效防止由于人为问题（如丢油、丢货）造成对公司的损失。可以对车辆运营的数据进行存储，从而规避许多不必要的风险。

本车载量控制系统在设定最大装载量，当车辆装载垃圾量超过该设定值时便会发出警报信号，可有效预防超载，提高行车安全。同时能够显示记录每一次货物的重量以及车上已装货物的总重量并打印，综合精度达1%~5%以内，安全过载能力150%，量程1~30t。客户选配GPS模块与数据传输平台后，可实现远距离称重监控，数据传输、浏览、运输的指挥调度功能，GPS定位、运行线路监控和实行远程网络管理等；也可选配无线发射和IC卡组件后，可实现无线数据发射、接收储存车辆的型号、相应的参数信息和实行远程网络管理，方便查询，防止人为作弊。



**方案二** 进口专用传感器，安装在汽车弹簧钢板上，不受超载、路况等条件限制。



### 车载称重系统简介

专用动态称重传感器  
(1-100吨)

数字接线盒

数字称重显示仪表

GPS One 模块  
(包括无线通讯系统)

RFID 模块

控制系统

管理软件

